

ABflo® 488 Rabbit anti-Human Integrin-β1/CD29 mAb

Catalog No.: A22191

Basic Information

Observed MW

Refer to figures

Calculated MW

87kDa/88kDa/91kDa

Category

Primary antibody

Applications

FC

Cross-Reactivity

Human

CloneNo number

ARC52470-ABf488

Conjugate

ABflo® 488. Ex:491nm. Em:516nm.

Recommended Dilutions

FC 5 µl per 10⁶ cells in
100 µl volume

Background

Integrins are heterodimeric proteins made up of alpha and beta subunits. At least 18 alpha and 8 beta subunits have been described in mammals. Integrin family members are membrane receptors involved in cell adhesion and recognition in a variety of processes including embryogenesis, hemostasis, tissue repair, immune response and metastatic diffusion of tumor cells. This gene encodes a beta subunit. Multiple alternatively spliced transcript variants which encode different protein isoforms have been found for this gene.

Immunogen Information

Gene ID

3688

Swiss Prot

P05556

Immunogen

Recombinant fusion protein containing a sequence corresponding to amino acids 1-728 of human Integrin-β1/CD29 (NP_002202.2).

Synonyms

CD29; FNRB; MDF2; VLAB; GPIIA; MSK12; VLA-BETA

Contact

☎ | 400-999-6126

✉ | cn.market@abclonal.com.cn

🌐 | www.abclonal.com.cn

Product Information

Source

Rabbit

Isotype

IgG

Purification

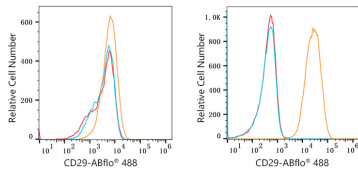
Affinity purification

Storage

Store at 2-8°C. Avoid freeze.

Buffer: PBS with 0.03% proclin300,0.2% BSA,pH7.3.

Validation Data



Flow cytometry: 1×10^6 RPMI 8226 cells (negative control, left) and A549 cells (right) were surface-stained with ABflo® 488 Rabbit anti-Human Integrin-β1/CD29 mAb (A22191, 5 μl/Test, orange line) or ABflo® 488 Rabbit IgG isotype control (A22069, 5 μl/Test, blue line). Non-fluorescently stained cells were used as blank control (red line).