

CD146/MCAM Rabbit mAb

Catalog No.: A22195 **Recombinant**

Basic Information

Observed MW

120kDa

Calculated MW

72kDa

Category

Primary antibody

Applications

WB, IF/ICC, ELISA

Cross-Reactivity

Human

CloneNo number

ARC53805

Background

Involved in glomerular filtration and vascular wound healing. Acts upstream of or within angiogenesis. Located in external side of plasma membrane. Biomarker of chronic obstructive pulmonary disease and uveal melanoma.

Recommended Dilutions

WB 1:2000 - 1:20000

IF/ICC 1:500 - 1:15000

ELISA Recommended starting concentration is 1 µg/mL. Please optimize the concentration based on your specific assay requirements.

Immunogen Information

Gene ID

4162

Swiss Prot

P43121

Immunogen

Recombinant protein (or fragment). This information is considered to be commercially sensitive.

Synonyms

CD146; MUC18; HEMCAM; METCAM; MeICAM; CD146/MCAM

Contact

 | 400-999-6126

 | cn.market@abclonal.com.cn

 | www.abclonal.com.cn

Product Information

Source

Rabbit

Isotype

IgG

Purification

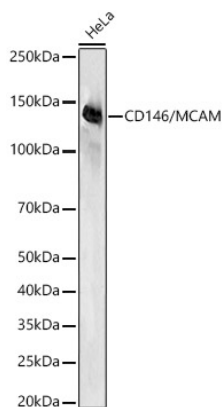
Affinity purification

Storage

Store at -20°C. Avoid freeze / thaw cycles.

Buffer: PBS with 0.09% Sodium azide, 0.05% BSA, 50% glycerol, pH7.3.

Validation Data



Western blot analysis of lysates from HeLa cells, using CD146/MCAM Rabbit mAb (A22195) at 1:20000 dilution.

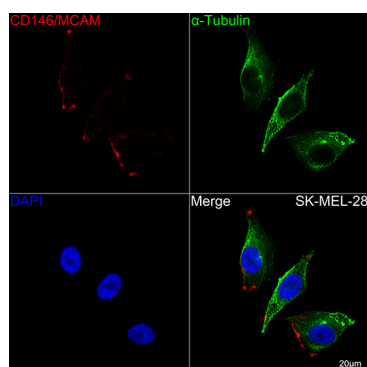
Secondary antibody: HRP-conjugated Goat anti-Rabbit IgG (H+L) (AS014) at 1:200000 dilution.

Lysates/proteins: 25µg per lane.

Blocking buffer: 3% nonfat dry milk in TBST.

Detection: ECL Basic Kit (RM00020).

Exposure time: 1s.



Confocal imaging of SK-MEL-28 cells using CD146/MCAM Rabbit mAb (A22195, dilution 1:1000) followed by a further incubation with Cy3 Goat Anti-Rabbit IgG (H+L) (AS007, dilution 1:500) (Red). The cells were counterstained with α-Tubulin Mouse mAb (AC012, dilution 1:400) followed by incubation with ABflo® 488-conjugated Goat Anti-Mouse IgG (H+L) Ab (AS076, dilution 1:500) (Green). DAPI was used for nuclear staining (Blue). Objective: 100x.