

IL2 Rabbit mAb

Catalog No.: A22200 **Recombinant**

Basic Information

Observed MW

22kDa

Calculated MW

19kDa

Category

Primary antibody

Applications

ELISA, WB

Cross-Reactivity

Mouse

CloneNo number

ARC55614

Background

Enables cytokine activity and interleukin-2 receptor binding activity. Involved in negative regulation of T-helper 17 cell differentiation. Acts upstream of or within several processes, including extrinsic apoptotic signaling pathway in absence of ligand; positive regulation of macromolecule metabolic process; and regulation of lymphocyte activation. Located in extracellular space. Is expressed in liver; omental bursa; thymus; and thymus primordium. Used to study Sjogren's syndrome and inflammatory bowel disease. Human ortholog(s) of this gene implicated in several diseases, including Takayasu's arteritis; auditory system disease (multiple); autoimmune disease (multiple); carcinoma (multiple); and neurodegenerative disease (multiple). Orthologous to human IL2 (interleukin 2).

Recommended Dilutions

WB 1:1000 - 1:5000

Immunogen Information

Gene ID

16183

Swiss Prot

P04351

Immunogen

Recombinant fusion protein containing a sequence corresponding to amino acids 21-169 of mouse IL2 (NP_032392.1).

Synonyms

IL-2; IL2

Contact

☎ | 400-999-6126

✉ | cn.market@abclonal.com.cn

🌐 | www.abclonal.com.cn

Product Information

Source

Rabbit

Isotype

IgG

Purification

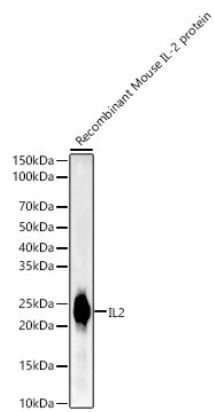
Affinity purification

Storage

Store at -20°C. Avoid freeze / thaw cycles.

Buffer: PBS with 0.05% proclin300, 0.05% BSA, 50% glycerol, pH7.3.

Validation Data



Western blot analysis of recombinant mouse IL-2 protein, using IL2 Rabbit mAb (A22200) at1:2000 dilution.
Secondary antibody: HRP Goat Anti-Rabbit IgG (H+L) (AS014) at 1:10000 dilution.
Lysates/proteins: 10ng per lane.
Blocking buffer: 3% nonfat dry milk in TBST.
Detection: ECL Basic Kit (RM00020).
Exposure time: 0.2s.