

Semaphorin 3A Rabbit mAb

Catalog No.: A22204 **Recombinant**

Basic Information

Observed MW

95kDa

Calculated MW

89kDa

Category

Primary antibody

Applications

ELISA, WB

Cross-Reactivity

Human, Mouse

CloneNo number

ARC56474

Background

This gene is a member of the semaphorin family and encodes a protein with an Ig-like C2-type (immunoglobulin-like) domain, a PSI domain and a Sema domain. This secreted protein can function as either a chemorepulsive agent, inhibiting axonal outgrowth, or as a chemoattractive agent, stimulating the growth of apical dendrites. In both cases, the protein is vital for normal neuronal pattern development. Increased expression of this protein is associated with schizophrenia and is seen in a variety of human tumor cell lines. Also, aberrant release of this protein is associated with the progression of Alzheimer's disease.

Recommended Dilutions

WB 1:2000 - 1:20000

Immunogen Information

Gene ID

10371

Swiss Prot

Q14563

Immunogen

Recombinant fusion protein containing a sequence corresponding to amino acids 582-771 of human Semaphorin 3A (NP_006071.1).

Synonyms

HH16; SemD; COLL1; SEMA1; SEMAD; SEMAL; coll-1; Hsema-I; SEMAIII; Hsema-III; Semaphorin 3A

Contact

☎ | 400-999-6126

✉ | cn.market@abclonal.com.cn

🌐 | www.abclonal.com.cn

Product Information

Source

Rabbit

Isotype

IgG

Purification

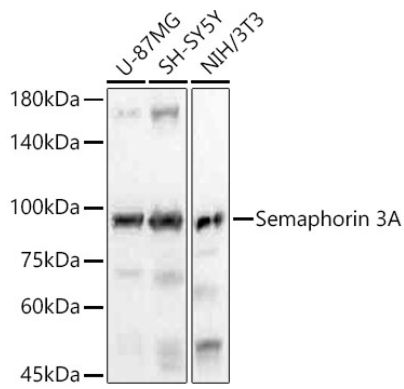
Affinity purification

Storage

Store at -20°C. Avoid freeze / thaw cycles.

Buffer: PBS with 0.05% proclin300, 0.05% BSA, 50% glycerol, pH7.3.

Validation Data



Western blot analysis of various lysates, using Semaphorin 3A antibody (A22204) at 1:20000 dilution.
Secondary antibody: HRP Goat Anti-Rabbit IgG (H+L) (AS014) at 1:10000 dilution.
Lysates/proteins: 25µg per lane.
Blocking buffer: 3% nonfat dry milk in TBST.
Detection: ECL Basic Kit (RM00020).
Exposure time: 10s.