

MAP2 Rabbit mAb

Catalog No.: A22206 **Recombinant** **2 Publications**

Basic Information

Observed MW

75kDa/

Calculated MW

200kDa/199kDa/50kDa/59kDa

Category

Primary antibody

Applications

ELISA,WB,IHC-P,IF/ICC

Cross-Reactivity

Human, Mouse, Rat

CloneNo number

ARC56285

Background

This gene encodes a protein that belongs to the microtubule-associated protein family. The proteins of this family are thought to be involved in microtubule assembly, which is an essential step in neurogenesis. The products of similar genes in rat and mouse are neuron-specific cytoskeletal proteins that are enriched in dendrites, implicating a role in determining and stabilizing dendritic shape during neuron development. A number of alternatively spliced variants encoding distinct isoforms have been described.

Recommended Dilutions

WB	1:2000 - 1:4000
IHC-P	1:50 - 1:200
IF/ICC	1:100 - 1:500

Immunogen Information

Gene ID

4133

Swiss Prot

P11137

Immunogen

Recombinant fusion protein containing a sequence corresponding to amino acids 1-118 of human MAP2 (NP_002365.3).

Synonyms

MAP-2; MAP2A; MAP2B; MAP2C; MAP2

Contact

☎ | 400-999-6126

✉ | cn.market@abclonal.com.cn

🌐 | www.abclonal.com.cn

Product Information

Source

Rabbit

Isotype

IgG

Purification

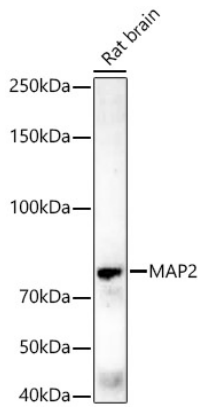
Affinity purification

Storage

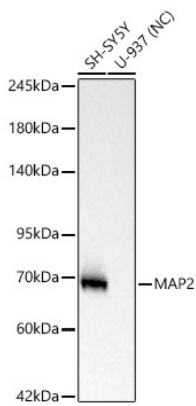
Store at -20°C. Avoid freeze / thaw cycles.

Buffer: PBS with 0.05% proclin300,0.05% BSA,50% glycerol,pH7.3.

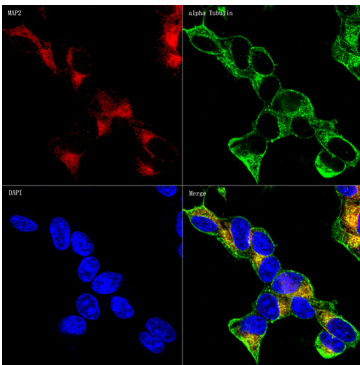
Validation Data



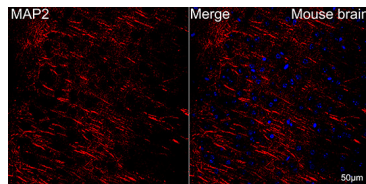
Western blot analysis of lysates from Rat brain, using MAP2 Rabbit mAb (A22206) at 1:4000 dilution. Secondary antibody: HRP Goat Anti-Rabbit IgG (H+L) (AS014) at 1:10000 dilution. Lysates/proteins: 25µg per lane. Blocking buffer: 3% nonfat dry milk in TBST. Detection: ECL Enhanced Kit (RM00021). Exposure time: 180s.



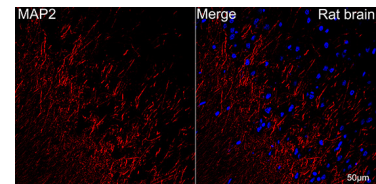
Western blot analysis of various lysates using MAP2 Rabbit mAb (A22206) at 1:1000 dilution incubated overnight at 4°C. Secondary antibody: HRP-conjugated Goat anti-Rabbit IgG (H+L)(AS014) at 1:10000 dilution. Lysates/proteins: 25 µg per lane. Blocking buffer: 3% nonfat dry milk in TBST. Detection: ECL Basic Kit (RM00020). Negative control (NC): U-937. Exposure time: 3 s.



Confocal imaging of SH-SY5Y cells using MAP2 Rabbit mAb (A22206, dilution 1:200) (Red). The cells were counterstained with α -Tubulin Mouse mAb (AC012, dilution 1:400) (Green). DAPI was used for nuclear staining (blue). Objective: 60x.

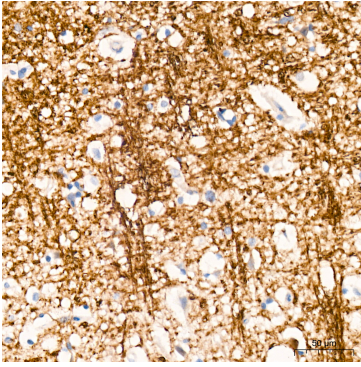


Confocal imaging of paraffin-embedded mouse brain using MAP2 Rabbit mAb (A22206, dilution 1:200) followed by a further incubation with Cy3 Goat Anti-Rabbit IgG (H+L) (AS007, dilution 1:500) (Red). DAPI was used for nuclear staining (Blue). Objective: 40x. Perform microwave antigen retrieval with 0.01M citrate buffer (pH 6.0) prior to IF staining.

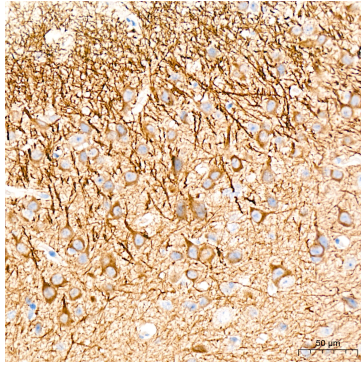


Confocal imaging of paraffin-embedded rat brain using MAP2 Rabbit mAb (A22206, dilution 1:200) followed by a further incubation with Cy3 Goat Anti-Rabbit IgG (H+L) (AS007, dilution 1:500) (Red). DAPI was used for nuclear staining (Blue). Objective: 40x. Perform microwave antigen retrieval with 0.01M citrate buffer (pH 6.0) prior to IF staining.

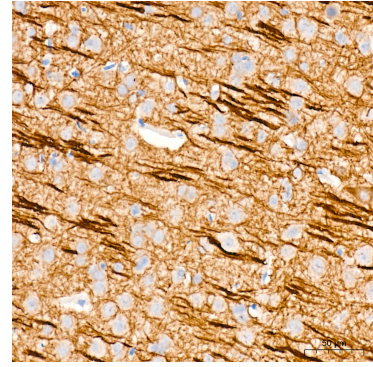
Validation Data



Immunohistochemistry analysis of MAP2 in paraffin-embedded human brain tissue using MAP2 Rabbit mAb (A22206) at a dilution of 1:200 (40x lens). High pressure antigen retrieval was performed with 0.01 M citrate buffer (pH 6.0) prior to IHC staining.



Immunohistochemistry analysis of MAP2 in paraffin-embedded mouse brain tissue using MAP2 Rabbit mAb (A22206) at a dilution of 1:200 (40x lens). High pressure antigen retrieval was performed with 0.01 M citrate buffer (pH 6.0) prior to IHC staining.



Immunohistochemistry analysis of MAP2 in paraffin-embedded rat brain tissue using MAP2 Rabbit mAb (A22206) at a dilution of 1:200 (40x lens). High pressure antigen retrieval was performed with 0.01 M citrate buffer (pH 6.0) prior to IHC staining.