

IL1 β Rabbit mAb

Catalog No.: A22207 **Recombinant** **1 Publications**

Basic Information

Observed MW

18kDa

Calculated MW

31kDa

Category

Primary antibody

Applications

ELISA,WB

Cross-Reactivity

Human

CloneNo number

ARC53403

Background

The protein encoded by this gene is a member of the interleukin 1 cytokine family. This cytokine is produced by activated macrophages as a proprotein, which is proteolytically processed to its active form by caspase 1 (CASP1/ICE). This cytokine is an important mediator of the inflammatory response, and is involved in a variety of cellular activities, including cell proliferation, differentiation, and apoptosis. The induction of cyclooxygenase-2 (PTGS2/COX2) by this cytokine in the central nervous system (CNS) is found to contribute to inflammatory pain hypersensitivity. Similarly, IL-1B has been implicated in human osteoarthritis pathogenesis. Patients with severe Coronavirus Disease 2019 (COVID-19) present elevated levels of pro-inflammatory cytokines such as IL-1B in bronchial alveolar lavage fluid samples. The lung damage induced by the Severe acute respiratory syndrome coronavirus 2 (SARS-CoV-2) is to a large extent, a result of the inflammatory response promoted by cytokines such as IL-1B. This gene and eight other interleukin 1 family genes form a cytokine gene cluster on chromosome 2.

Recommended Dilutions

WB 1:1000 - 1:5000

Immunogen Information

Gene ID

3553

Swiss Prot

P01584

Immunogen

Recombinant fusion protein containing a sequence corresponding to amino acids 117-269 of human IL1 β (NP_000567.1).

SynonymsIL-1; IL1F2; IL1beta; IL1-BETA; IL1 β

Contact

 | 400-999-6126 | cn.market@abclonal.com.cn | www.abclonal.com.cn

Product Information

Source

Rabbit

Isotype

IgG

Purification

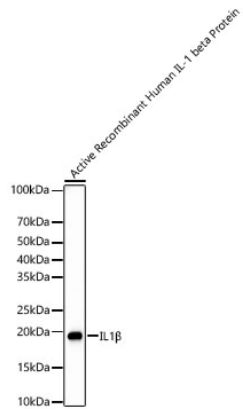
Affinity purification

Storage

Store at -20°C. Avoid freeze / thaw cycles.

Buffer: PBS with 0.05% proclin300,0.05% BSA,50% glycerol,pH7.3.

Validation Data



Western blot analysis of Active Recombinant Human IL-1 beta Protein, using IL1 β Rabbit mAb (A22207) at 1:2000 dilution.

Secondary antibody: HRP Goat Anti-Rabbit IgG (H+L) (AS014) at 1:10000 dilution.

Lysates/proteins: 5ng per lane.

Blocking buffer: 3% nonfat dry milk in TBST.

Detection: ECL Basic Kit (RM00020).

Exposure time: 180s.