

# Neuropilin-1 (NRP1) Rabbit mAb

Catalog No.: A22213 **Recombinant**

## Basic Information

**Observed MW**

120-135kDa

**Calculated MW**

68kDa/71kDa/103kDa

**Category**

Primary antibody

**Applications**

ELISA, WB

**Cross-Reactivity**

Human

**CloneNo number**

ARC55415

## Background

This gene encodes one of two neuropilins, which contain specific protein domains which allow them to participate in several different types of signaling pathways that control cell migration. Neuropilins contain a large N-terminal extracellular domain, made up of complement-binding, coagulation factor V/VIII, and meprin domains. These proteins also contains a short membrane-spanning domain and a small cytoplasmic domain. Neuropilins bind many ligands and various types of co-receptors; they affect cell survival, migration, and attraction. Some of the ligands and co-receptors bound by neuropilins are vascular endothelial growth factor (VEGF) and semaphorin family members. This protein has also been determined to act as a co-receptor for SARS-CoV-2 (which causes COVID-19) to infect host cells.

## Recommended Dilutions

WB 1:1000 - 1:5000

## Immunogen Information

**Gene ID**

8829

**Swiss Prot**

O14786

**Immunogen**

Recombinant fusion protein containing a sequence corresponding to amino acids 22-644 of human Neuropilin-1 (NRP1) (NP\_003864.5).

**Synonyms**

NP1; NRP; BDCA4; CD304; VEGF165R; Neuropilin-1 (NRP1)

## Contact

 | 400-999-6126 | [cn.market@abclonal.com.cn](mailto:cn.market@abclonal.com.cn) | [www.abclonal.com.cn](http://www.abclonal.com.cn)

## Product Information

**Source**

Rabbit

**Isotype**

IgG

**Purification**

Affinity purification

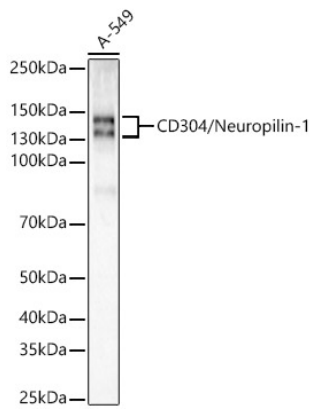
**Storage**

Store at -20°C. Avoid freeze / thaw cycles.

Buffer: PBS with 0.05% proclin300, 0.05% BSA, 50% glycerol, pH7.3.

## Validation Data

---



Western blot analysis of A-549, using Neuropilin-1 (NRP1) antibody (A22213) at 1:2000 dilution.  
Secondary antibody: HRP Goat Anti-Rabbit IgG (H+L) (AS014) at 1:200000 dilution.  
Lysates/proteins: 25µg per lane.  
Blocking buffer: 3% nonfat dry milk in TBST.  
Detection: ECL Enhanced Kit (RM00021).  
Exposure time: 30s.