

# ABflo® 647 Rabbit anti-Human CD30 mAb

Catalog No.: A22215

## Basic Information

### Observed MW

### Calculated MW

14kDa/50kDa/63kDa

### Category

Primary antibody

### Applications

FC

### Cross-Reactivity

Human

### CloneNo number

ARC52955-ABf647

### Conjugate

ABflo® 647. Ex:648nm. Em:664nm.

## Recommended Dilutions

FC 5 µl per 10<sup>6</sup> cells in  
100 µl volume

## Background

The protein encoded by this gene is a member of the TNF-receptor superfamily. This receptor is expressed by activated, but not by resting, T and B cells. TRAF2 and TRAF5 can interact with this receptor, and mediate the signal transduction that leads to the activation of NF-kappaB. This receptor is a positive regulator of apoptosis, and also has been shown to limit the proliferative potential of autoreactive CD8 effector T cells and protect the body against autoimmunity. Two alternatively spliced transcript variants of this gene encoding distinct isoforms have been reported.

## Immunogen Information

### Gene ID

943

### Swiss Prot

P28908

### Immunogen

Recombinant fusion protein containing a sequence corresponding to amino acids 19-379 of human CD30 (NP\_001234.3).

### Synonyms

CD30; Ki-1; D1S166E

## Contact

 | 400-999-6126

 | [cn.market@abclonal.com.cn](mailto:cn.market@abclonal.com.cn)

 | [www.abclonal.com.cn](http://www.abclonal.com.cn)

## Product Information

### Source

Rabbit

### Isotype

IgG

### Purification

Affinity purification

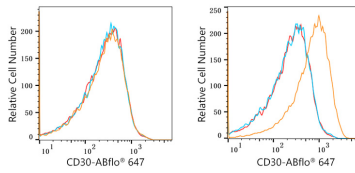
### Storage

Store at 2-8°C. Avoid freeze.

Buffer: PBS with 0.03% proclin300,0.2% BSA,pH7.3.

## Validation Data

---



Flow cytometry:  $1 \times 10^6$  A549 cells (negative control, left) and K-562 cells (right) were surface-stained with ABflo® 647 Rabbit anti-Human CD30 mAb (A22215, 5  $\mu$ l/Test, orange line) or ABflo® 647 Rabbit IgG isotype control (A22070, 5  $\mu$ l/Test, blue line). Non-fluorescently stained cells were used as blank control (red line).