

ABflo® 488 Rabbit anti-Human LAMP2 mAb

Catalog No.: A22216

Basic Information

Observed MW

Refer to figures

Calculated MW

44kDa/45kDa

Category

Primary antibody

Applications

IF/ICC,FC (intra)

Cross-Reactivity

Human

CloneNo number

ARC54767-ABf488

Conjugate

ABflo® 488. Ex:491nm. Em:516nm.

Recommended Dilutions

IF/ICC 1:50 - 1:200

FC (intra) 5 µl per 10⁶ cells in
100 µl volume

Background

The protein encoded by this gene is a member of a family of membrane glycoproteins. This glycoprotein provides selectins with carbohydrate ligands. It may play a role in tumor cell metastasis. It may also function in the protection, maintenance, and adhesion of the lysosome. Alternative splicing of this gene results in multiple transcript variants encoding distinct proteins.

Immunogen Information

Gene ID

3920

Swiss Prot

P13473

Immunogen

Recombinant fusion protein containing a sequence corresponding to amino acids 29-375 of human LAMP2 (NP_002285.1).

Synonyms

DND; LAMPB; CD107b; LAMP-2; LGP-96; LGP110

Contact

☎ | 400-999-6126

✉ | cn.market@abclonal.com.cn

🌐 | www.abclonal.com.cn

Product Information

Source

Rabbit

Isotype

IgG

Purification

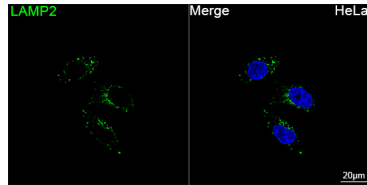
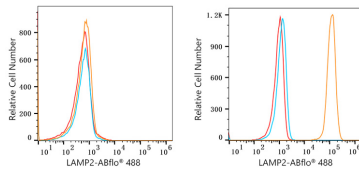
Affinity purification

Storage

Store at 2-8°C. Avoid freeze.

Buffer: PBS with 0.03% proclin300,0.2% BSA,pH7.3.

Validation Data



Flow cytometry: 1×10^6 knockout (KO) HeLa cells (negative control, left) and HeLa cells (right) were intracellularly stained with ABflo® 488 Rabbit anti-Human LAMP2 mAb (A22216, 5 μ l/Test, orange line) or ABflo® 488 Rabbit IgG isotype control (A22069, 5 μ l/Test, blue line). Non-fluorescently stained cells were used as blank control (red line).

Confocal imaging of HeLa cells using ABflo® 488 Rabbit anti-Human LAMP2 mAb (A22216, dilution 1:200). DAPI was used for nuclear staining (Blue). Objective: 100x.