

# PDGFR alpha Rabbit mAb

Catalog No.: A22220 **Recombinant**

## Basic Information

### Observed MW

Refer to figures

### Calculated MW

123kDa

### Category

Primary antibody

### Applications

ELISA, IHC-P

### Cross-Reactivity

Human

### CloneNo number

ARC56219

## Background

This gene encodes a cell surface tyrosine kinase receptor for members of the platelet-derived growth factor family. These growth factors are mitogens for cells of mesenchymal origin. The identity of the growth factor bound to a receptor monomer determines whether the functional receptor is a homodimer or a heterodimer, composed of both platelet-derived growth factor receptor alpha and beta polypeptides. Studies suggest that this gene plays a role in organ development, wound healing, and tumor progression. Mutations in this gene have been associated with idiopathic hypereosinophilic syndrome, somatic and familial gastrointestinal stromal tumors, and a variety of other cancers.

## Recommended Dilutions

IHC-P 1:500 - 1:1000

## Immunogen Information

### Gene ID

5156

### Swiss Prot

P16234

### Immunogen

Recombinant fusion protein containing a sequence corresponding to amino acids 24-524 of human PDGFR alpha (NP\_006197.1).

### Synonyms

CD140A; PDGFR2; PDGFR-2; PDGFR alpha

## Contact

☎ | 400-999-6126

✉ | [cn.market@abclonal.com.cn](mailto:cn.market@abclonal.com.cn)

🌐 | [www.abclonal.com.cn](http://www.abclonal.com.cn)

## Product Information

### Source

Rabbit

### Isotype

IgG

### Purification

Affinity purification

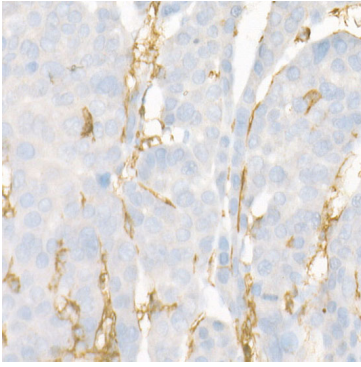
### Storage

Store at -20°C. Avoid freeze / thaw cycles.

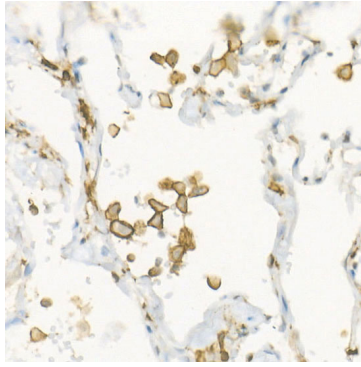
Buffer: PBS with 0.05% proclin300, 0.05% BSA, 50% glycerol, pH7.3.

## Validation Data

---



Immunohistochemistry analysis of paraffin-embedded human liver cancer using PDGFR alpha Rabbit mAb (A22220) at dilution of 1:200(40x lens).Perform high pressure antigen retrieval with 10 mM citrate buffer pH 6.0 before commencing with IHC staining protocol.



Immunohistochemistry analysis of paraffin-embedded human lung using PDGFR alpha Rabbit mAb (A22220) at dilution of 1:200(40x lens).Perform high pressure antigen retrieval with 10 mM citrate buffer pH 6.0 before commencing with IHC staining protocol.