

# Pan-Succinyl-K Rabbit mAb

Catalog No.: A22228 **Recombinant**

## Basic Information

### Observed MW

10kDa-250kDa/10KDa

### Calculated MW

### Category

Primary antibody

### Applications

WB,IP,DB,ELISA

### Cross-Reactivity

Human, Mouse, Rat, Other (Wide Range Predicted)

### CloneNo number

ARC55837


## Background

The lysine residue in proteins can undergo to many types of PTMs, such as methylation, acetylation, biotinylation, ubiquitination, ubiquitin-like modifications, propionylation and butyrylation, then leading to the remarkable complexity of PTM networks. Succinylation is a posttranslational modification (PTM) where a succinyl group is added to a Lys (K) residue of a protein molecule. It has been shown that the lysine succinylation responds to different physiological conditions and is evolutional conserved. It has been identified 2,565 succinylation sites from 779 proteins and revealed that lysine succinylation have potential impacts on enzymes involved in mitochondrial metabolism including the amino acid degradation, tricarboxylic acid (TCA) cycle and fatty acid metabolism. The lysine succinylation also occurs in histones, suggesting that it may play an important role in regulating chromatin structures and functions as well.

## Recommended Dilutions

**WB** 1:1000 - 1:5000**DB** 1:500 -1:2000**IP** 0.5µg-4µg antibody for  
200µg-600µg extracts of  
whole cells**ELISA** Recommended starting  
concentration is 1 µg/mL.  
Please optimize the  
concentration based on  
your specific assay  
requirements.

## Contact

 | 400-999-6126 | [cn.market@abclonal.com.cn](mailto:cn.market@abclonal.com.cn) | [www.abclonal.com.cn](http://www.abclonal.com.cn)

## Immunogen Information

### Gene ID

### Swiss Prot

### Immunogen

Synthetic peptide. This information is considered to be commercially sensitive.

### Synonyms

## Product Information

### Source

Rabbit

### Isotype

IgG

### Purification

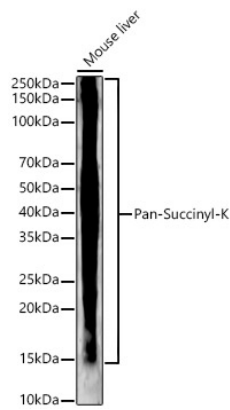
Affinity purification

### Storage

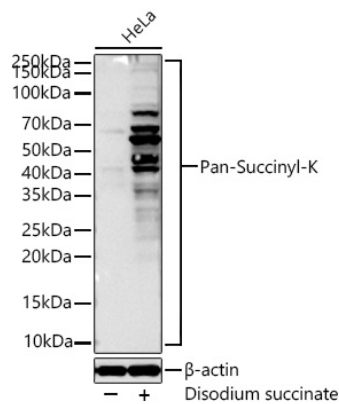
Store at -20°C. Avoid freeze / thaw cycles.

Buffer: PBS containing 50% glycerol and 0.05% BSA, preserved with proclin300 or sodium azide (as specified on the Certificate of Analysis), pH 7.3.

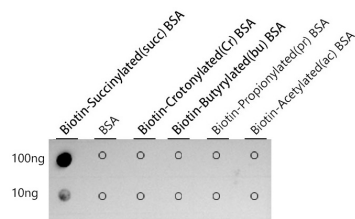
Validation Data



Western blot analysis of lysates from Mouse liver, using Pan-Succinyl-K Rabbit mAb (A22228) at 1:2000 dilution.  
Secondary antibody: HRP-conjugated Goat anti-Rabbit IgG (H+L) (AS014) at 1:10000 dilution.  
Lysates/proteins: 25µg per lane.  
Blocking buffer: 3% nonfat dry milk in TBST.  
Detection: ECL Basic Kit (RM00020).  
Exposure time: 180s.



Western blot analysis of lysates from HeLa cells using Pan-Succinyl-K Rabbit mAb (A22228) at 1:1000 dilution incubated overnight at 4°C. HeLa cells were treated with Disodium succinate (100 nM) at 37°C for 24 hours.  
Secondary antibody: HRP-conjugated Goat anti-Rabbit IgG (H+L) (AS014) at 1:10000 dilution.  
Lysates/proteins: 30 µg per lane.  
Blocking buffer: 3 % nonfat dry milk in TBST.  
Detection: ECL Basic Kit (RM00020).  
Exposure time: 180s.



Dot-blot analysis of all sorts of peptides using Pan-Succinyl-K Rabbit mAb (A22228) at 1:1000 dilution.