

BACH1 Rabbit mAb

Catalog No.: A22230 **Recombinant**

Basic Information

Observed MW

100-110kDa

Calculated MW

82kDa

Category

Primary antibody

Applications

WB,ELISA,CHIP

Cross-Reactivity

Human, Mouse

CloneNo number

ARC56290

Background

This gene encodes a transcription factor that belongs to the cap'n'collar type of basic region leucine zipper factor family (CNC-bZip). The encoded protein contains broad complex, tramtrack, bric-a-brac/poxvirus and zinc finger (BTB/POZ) domains, which is atypical of CNC-bZip family members. These BTB/POZ domains facilitate protein-protein interactions and formation of homo- and/or hetero-oligomers. When this encoded protein forms a heterodimer with MafK, it functions as a repressor of Maf recognition element (MARE) and transcription is repressed. Multiple alternatively spliced transcript variants have been identified for this gene.

Recommended Dilutions

WB 1:2000 - 1:8000

ELISA Recommended starting concentration is 1 µg/mL. Please optimize the concentration based on your specific assay requirements.

CHIP 5µg antibody for 10µg-15µg of Chromatin

Contact

☎ | 400-999-6126

✉ | cn.market@abclonal.com.cn

🌐 | www.abclonal.com.cn

Immunogen Information

Gene ID

571

Swiss Prot

O14867

Immunogen

Recombinant fusion protein containing a sequence corresponding to amino acids 410-736 of human BACH1 (NP_001177.1).

Synonyms

BACH-1; BTBD24; BACH1

Product Information

Source

Rabbit

Isotype

IgG

Purification

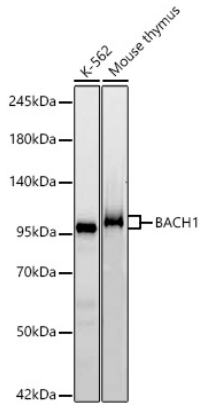
Affinity purification

Storage

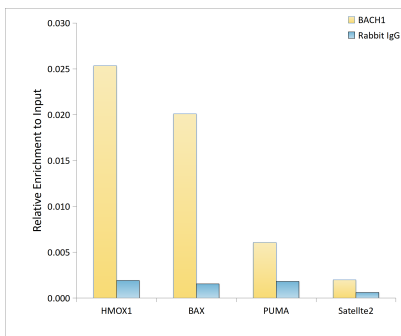
Store at -20°C. Avoid freeze / thaw cycles.

Buffer: PBS with 0.05% proclin300,0.05% BSA,50% glycerol,pH7.3.

Validation Data



Western blot analysis of various lysates using BACH1 Rabbit mAb (A22230) at 1:11000 dilution incubated overnight at 4°C.
Secondary antibody: HRP-conjugated Goat anti-Rabbit IgG (H+L) (AS014) at 1:10000 dilution.
Lysates/proteins: 25 µg per lane.
Blocking buffer: 3% nonfat dry milk in TBST.
Detection: ECL Basic Kit (RM00020).
Exposure time: 90s.



Chromatin immunoprecipitation analysis of extracts of K562 cells, using BACH1 antibody (A22230) and rabbit IgG. The amount of immunoprecipitated DNA was checked by quantitative PCR. Histogram was constructed by the ratios of the immunoprecipitated DNA to the input.