

ABI4 Rabbit pAb

Catalog No.: A22239

Basic Information

Observed MW

36kDa

Calculated MW

36kDa

Category

Primary antibody

Applications

ELISA, WB

Cross-Reactivity

Arabidopsis thaliana

Background

Encodes a member of the DREB subfamily A-3 of ERF/AP2 transcription factor family (ABI4). The protein contains one AP2 domain. There is only one member in this family. Involved in abscisic acid (ABA) signal transduction, ABA-mediated glucose response, and hexokinase-dependent sugar responses. Acts downstream of GUN1 in retrograde signaling. Expressed most abundantly in developing siliques and to a lesser degree in seedlings.

Recommended Dilutions

WB 1:1000 - 1:5000

Immunogen Information

Gene ID

818614

Swiss Prot

A0MES8

Immunogen

A synthetic peptide corresponding to a sequence within amino acids 1-100 of arabidopsis thaliana ABI4 (NP_181551.1).

Synonyms

ABA INSENSITIVE 4; ABCISIC ACID-INSENSITIVE PROTEIN 4; ATABI4; GIN6; GLUCOSE INSENSITIVE 6; IMPAIRED SUCROSE INDUCTION 3; ISI3; SALOBRENO 5; SAN5; SIS5; SUCROSE UNCOUPLED 6; SUGAR-INSENSITIVE 5; SUN6; T7M7.16; ABI4

Contact

☎ | 400-999-6126

✉ | cn.market@abclonal.com.cn

🌐 | www.abclonal.com.cn

Product Information

Source

Rabbit

Isotype

IgG

Purification

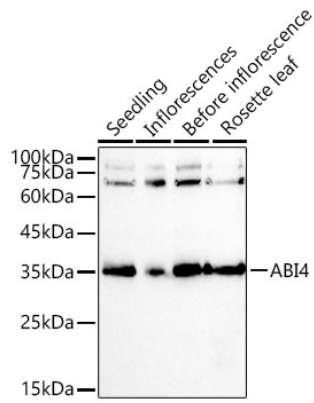
Affinity purification

Storage

Store at -20°C. Avoid freeze / thaw cycles.

Buffer: PBS with 0.05% proclin300, 50% glycerol, pH7.3.

Validation Data



Western blot analysis of various tissues from *Arabidopsis thaliana*, using ABI4 Rabbit pAb (A22239) at 1:1000 dilution.

Secondary antibody: HRP Goat Anti-Rabbit IgG (H+L) (AS014) at 1:10000 dilution.

Lysates / proteins: 25 µg per lane.

Blocking buffer: 3 % nonfat dry milk in TBST.

Detection: ECL Basic Kit (RM00020).

Exposure time: 30s.