

GID1A Rabbit pAb

Catalog No.: A22240

Basic Information

Observed MW

39kDa

Calculated MW

39kDa

Category

Primary antibody

Applications

ELISA, WB

Cross-Reactivity

Arabidopsis thaliana

Background

Encodes a gibberellin (GA) receptor ortholog of the rice GA receptor gene (OsGID1). Has GA-binding activity, showing higher affinity to GA4. Interacts with DELLA proteins in vivo in the presence of GA4. The DELLA region alone can interact with GID1A in GA-dependent manner in a Y2H assay.

Recommended Dilutions

WB 1:1000 - 1:5000

Immunogen Information

Gene ID

819674

Swiss Prot

Q9MAA7

Immunogen

A synthetic peptide corresponding to a sequence within amino acids 50-150 of arabidopsis thaliana GID1A (NP_187163.1).

Synonyms

ATGID1A; GA INSENSITIVE DWARF1A; T12H1.8; T12H1_8; GID1A

Contact

☎ | 400-999-6126

✉ | cn.market@abclonal.com.cn

🌐 | www.abclonal.com.cn

Product Information

Source

Rabbit

Isotype

IgG

Purification

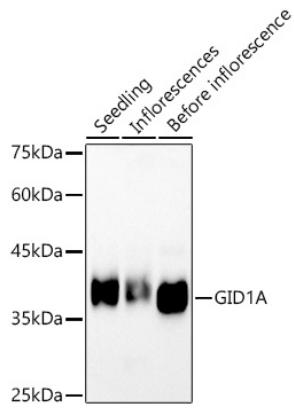
Affinity purification

Storage

Store at -20°C. Avoid freeze / thaw cycles.

Buffer: PBS with 0.05% proclin300, 50% glycerol, pH7.3.

Validation Data



Western blot analysis of various tissues from *Arabidopsis thaliana*, using GID1A Rabbit pAb (A22240) at 1:2000 dilution.

Secondary antibody: HRP Goat Anti-Rabbit IgG (H+L) (AS014) at 1:10000 dilution.

Lysates / proteins: 25 µg per lane.

Blocking buffer: 3 % nonfat dry milk in TBST.

Detection: ECL Basic Kit (RM00020).

Exposure time: 30s.