

# CMTM6 Rabbit mAb

Catalog No.: A22250 **Recombinant**

## Basic Information

### Observed MW

20-22kDa

### Calculated MW

20kDa

### Category

Primary antibody

### Applications

ELISA, WB, IF/ICC

### Cross-Reactivity

Human, Mouse

### CloneNo number

ARC53666

## Background

This gene belongs to the chemokine-like factor gene superfamily, a novel family that is similar to the chemokine and transmembrane 4 superfamilies. This gene is one of several chemokine-like factor genes located in a cluster on chromosome 3. This gene is widely expressed in many tissues, but the exact function of the encoded protein is unknown.

## Recommended Dilutions

**WB** 1:10000 - 1:30000

**IF/ICC** 1:50 - 1:200

## Immunogen Information

### Gene ID

54918

### Swiss Prot

Q9NX76

### Immunogen

A synthetic peptide corresponding to a sequence within amino acids 84-183 of human CMTM6 (NP\_060271.1).

### Synonyms

CKLFSF6; PRO2219; CMTM6

## Contact

☎ | 400-999-6126

✉ | [cn.market@abclonal.com.cn](mailto:cn.market@abclonal.com.cn)

🌐 | [www.abclonal.com.cn](http://www.abclonal.com.cn)

## Product Information

### Source

Rabbit

### Isotype

IgG

### Purification

Affinity purification

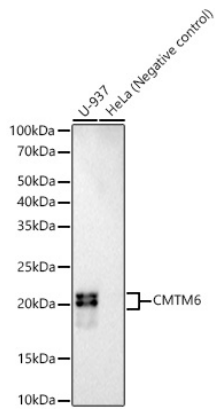
### Storage

Store at -20°C. Avoid freeze / thaw cycles.

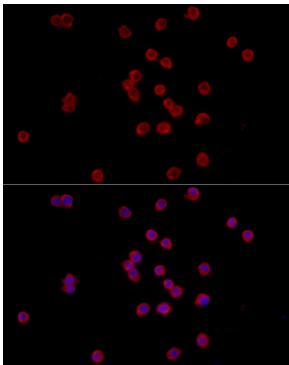
Buffer: PBS with 0.05% proclin300, 0.05% BSA, 50% glycerol, pH7.3.

## Validation Data

---



Western blot analysis of various lysates, using CMTM6 Rabbit mAb (A22250) at 1:30000 dilution.  
Secondary antibody: HRP Goat Anti-Rabbit IgG (H+L) (AS014) at 1:10000 dilution.  
Lysates/proteins: 25µg per lane.  
Blocking buffer: 3% nonfat dry milk in TBST.  
Detection: ECL Basic Kit (RM00020).  
Exposure time: 180s.



Immunofluorescence analysis of RAW 264.7 cells using CMTM6 Rabbit mAb (A22250) at dilution of 1:200 (40x lens). Secondary antibody: Cy3 Goat Anti-Rabbit IgG (H+L) (AS007) at 1:500 dilution. Blue: DAPI for nuclear staining.