

# APRR3 Rabbit pAb

Catalog No.: A22254

## Basic Information

### Observed MW

55kDa

### Calculated MW

### Category

Primary antibody

### Applications

WB, ELISA

### Cross-Reactivity

Arabidopsis thaliana

## Background

Encodes pseudo-response regulator 3 (APRR3/PRR3). PRR3 transcript levels vary in a circadian pattern with peak expression at dusk under long and short day conditions. PRR3 affects the period of the circadian clock and seedlings with reduced levels of PRR3 have shorter periods, based on transcriptional assays of clock-regulated genes. PRR3 is expressed in the vasculature of cotyledons and leaves where it may help stabilize the TOC1 protein by preventing interactions between TOC1 and the F-box protein ZTL.

## Recommended Dilutions

**WB** 1:500 - 1:1000

**ELISA** Recommended starting concentration is 1 µg/mL. Please optimize the concentration based on your specific assay requirements.

## Immunogen Information

### Gene ID

836132

### Swiss Prot

### Immunogen

Recombinant protein (or fragment). This information is considered to be commercially sensitive.

### Synonyms

APRR3; MGO3.8; MGO3\_8; pseudo-response regulator 3

## Contact

☎ | 400-999-6126

✉ | [cn.market@abclonal.com.cn](mailto:cn.market@abclonal.com.cn)

🌐 | [www.abclonal.com.cn](http://www.abclonal.com.cn)

## Product Information

### Source

Rabbit

### Isotype

IgG

### Purification

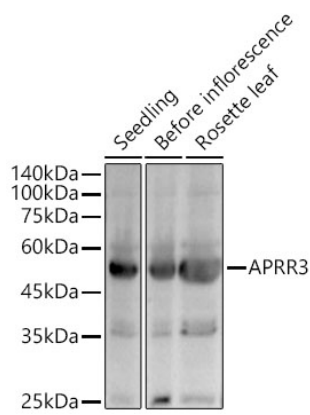
Affinity purification

### Storage

Store at -20°C. Avoid freeze / thaw cycles.

Buffer: PBS containing 50% glycerol, preserved with proclin300 or sodium azide (as specified on the Certificate of Analysis), pH 7.3.

# Validation Data



Western blot analysis of extracts of various tissues from Arabidopsis thaliana, using APRR3 Rabbit pAb (A22254) at 1:900 dilution.  
Secondary antibody: HRP-conjugated Goat anti-Rabbit IgG (H+L) (AS014) at 1:10000 dilution.  
Lysates/proteins: 25µg per lane.  
Blocking buffer: 3% nonfat dry milk in TBST.  
Detection: ECL Basic Kit (RM00020).  
Exposure time: 20s.