

# RhoB Rabbit mAb

Catalog No.: A22258

Recombinant

2 Publications

## Basic Information

### Observed MW

22kDa

### Calculated MW

22kDa

### Category

Primary antibody

### Applications

WB, ELISA

### Cross-Reactivity

Human, Mouse, Rat

### CloneNo number

ARC56483

## Background

Predicted to enable GTP binding activity; GTPase activity; and protein kinase binding activity. Involved in several processes, including cellular response to hydrogen peroxide; cellular response to ionizing radiation; and regulation of cell migration. Located in cleavage furrow and endosome membrane. Biomarker of breast cancer.

## Recommended Dilutions

**WB** 1:5000 - 1:20000

**ELISA** Recommended starting concentration is 1 µg/mL. Please optimize the concentration based on your specific assay requirements.

## Immunogen Information

### Gene ID

388

### Swiss Prot

P62745

### Immunogen

Synthetic peptide. This information is considered to be commercially sensitive.

### Synonyms

ARH6; ARHB; RHOH6; MST081; MSTP081; RhoB

## Contact

☎ | 400-999-6126

✉ | [cn.market@abclonal.com.cn](mailto:cn.market@abclonal.com.cn)

🌐 | [www.abclonal.com.cn](http://www.abclonal.com.cn)

## Product Information

### Source

Rabbit

### Isotype

IgG

### Purification

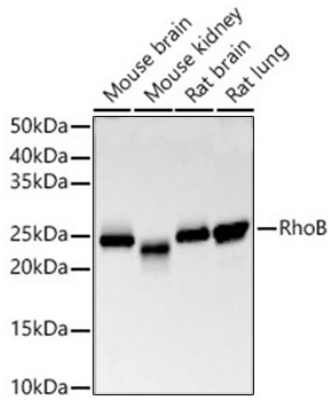
Affinity purification

### Storage

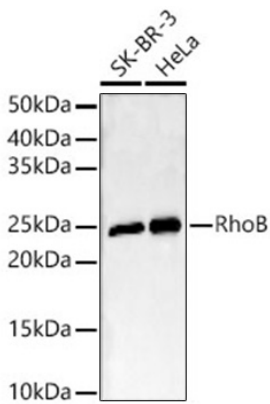
Store at -20°C. Avoid freeze / thaw cycles.

Buffer: PBS containing 50% glycerol and 0.05% BSA, preserved with proclin300 or sodium azide (as specified on the Certificate of Analysis), pH 7.3.

## Validation Data



Western blot analysis of various lysates, using RhoB Rabbit mAb (A22258) at 1:20000 dilution. Secondary antibody: HRP-conjugated Goat anti-Rabbit IgG (H+L) (AS014) at 1:10000 dilution. Lysates/proteins: 25 µg per lane. Blocking buffer: 3% nonfat dry milk in TBST. Detection: ECL Basic Kit (RM00020). Exposure time: 30 s.



Western blot analysis of various lysates, using RhoB Rabbit mAb (A22258) at 1:20000 dilution. Secondary antibody: HRP-conjugated Goat anti-Rabbit IgG (H+L) (AS014) at 1:10000 dilution. Lysates/proteins: 25 µg per lane. Blocking buffer: 3% nonfat dry milk in TBST. Detection: ECL Basic Kit (RM00020). Exposure time: 180 s.