

COMP Rabbit mAb

Catalog No.: A22260 **Recombinant**

Basic Information

Observed MW

100kDa

Calculated MW

83kDa

Category

Primary antibody

Applications

ELISA, WB

Cross-Reactivity

Human, Mouse, Rat

CloneNo number

ARC54617

Background

The protein encoded by this gene is a noncollagenous extracellular matrix (ECM) protein. It consists of five identical glycoprotein subunits, each with EGF-like and calcium-binding (thrombospondin-like) domains. Oligomerization results from formation of a five-stranded coiled coil and disulfides. Binding to other ECM proteins such as collagen appears to depend on divalent cations. Contraction or expansion of a 5 aa aspartate repeat and other mutations can cause pseudoachondroplasia (PSACH) and multiple epiphyseal dysplasia (MED).

Recommended Dilutions

WB 1:1000 - 1:5000

Immunogen Information

Gene ID

1311

Swiss Prot

P49747

Immunogen

A synthetic peptide corresponding to a sequence within amino acids 50-150 of human COMP (NP_000086.2).

Synonyms

MED; CTS2; EDM1; EPD1; TSP5; PSACH; THBS5; TSP-5; COMP

Contact

 | 400-999-6126

 | cn.market@abclonal.com.cn

 | www.abclonal.com.cn

Product Information

Source

Rabbit

Isotype

IgG

Purification

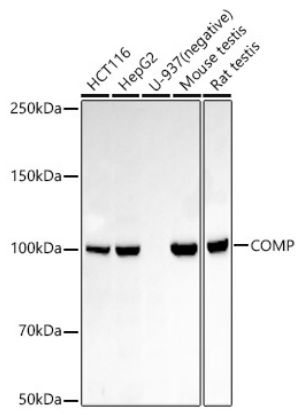
Affinity purification

Storage

Store at -20°C. Avoid freeze / thaw cycles.

Buffer: PBS with 0.05% proclin300, 0.05% BSA, 50% glycerol, pH7.3.

Validation Data



Western blot analysis of various lysates, using COMP antibody (A22260) at 1:2000 dilution.
Secondary antibody: HRP Goat Anti-Rabbit IgG (H+L) (AS014) at 1:10000 dilution.
Lysates/proteins: 25µg per lane.
Blocking buffer: 3% nonfat dry milk in TBST.
Detection: ECL Basic Kit (RM00020).
Exposure time: 180s.