

DiMethyl-Histone H4-K20 Rabbit mAb

Catalog No.: A22268 **Recombinant**

Basic Information

Observed MW

11 kDa

Calculated MW

11 kDa

Category

Primary antibody

Applications

WB,DB,IHC-P,IF/ICC,ELISA

Cross-Reactivity

Human, Mouse, Rat, Other (Wide Range Predicted)

CloneNo number

ARC55058

Background

Histones are basic nuclear proteins that are responsible for the nucleosome structure of the chromosomal fiber in eukaryotes. This structure consists of approximately 146 bp of DNA wrapped around a nucleosome, an octamer composed of pairs of each of the four core histones (H2A, H2B, H3, and H4). The chromatin fiber is further compacted through the interaction of a linker histone, H1, with the DNA between the nucleosomes to form higher order chromatin structures. This gene is intronless and encodes a replication-dependent histone that is a member of the histone H4 family. Transcripts from this gene lack polyA tails; instead, they contain a palindromic termination element. This gene is found in a histone cluster on chromosome 1. This gene is one of four histone genes in the cluster that are duplicated; this record represents the centromeric copy.

Recommended Dilutions

WB 1:1000 - 1:6000**DB** 1:500 - 1:1000**IHC-P** 1:500 - 1:1000**IF/ICC** 1:500 - 1:1000**ELISA** Recommended starting concentration is 1 µg/mL. Please optimize the concentration based on your specific assay requirements.

Immunogen Information

Gene ID

8359

Swiss Prot

P62805

Immunogen

Synthetic peptide. This information is considered to be commercially sensitive.

Synonyms

H4; H4/n; H4C1; H4C2; H4C3; H4C4; H4C5; H4C6; H4C8; H4C9; H4F2; H4FN; FO108; H4-16; H4C11; H4C12; H4C13; H4C15; H4C16; HIST2H4; HIST2H4A; DiMethyl-Histone H4-K20

Contact

 | 400-999-6126 | cn.market@abclonal.com.cn | www.abclonal.com.cn

Product Information

Source

Rabbit

Isotype

IgG

Purification

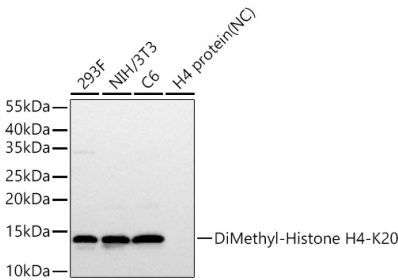
Affinity purification

Storage

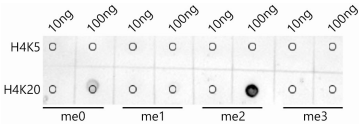
Store at -20°C. Avoid freeze / thaw cycles.

Buffer: PBS with 0.09% Sodium azide, 0.05% BSA, 50% glycerol, pH7.3.

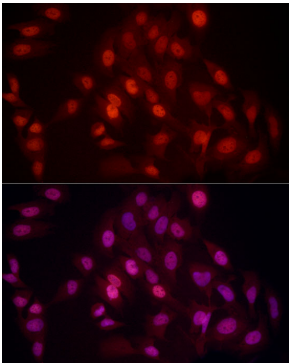
Validation Data



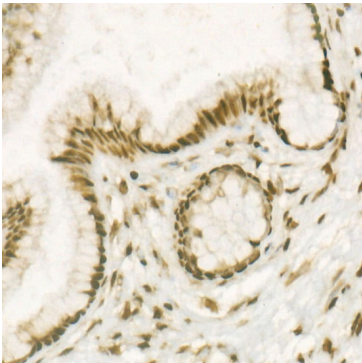
Western blot analysis of various lysates using DiMethyl-Histone H4-K20 Rabbit mAb (A22268) at 1:2000 dilution incubated at room temperature for 1.5 hours.
Secondary antibody: HRP-conjugated Goat anti-Rabbit IgG (H+L) (AS014) at 1:10000 dilution.
Lysates/proteins: 25 µg per lane.
Blocking buffer: 3% nonfat dry milk in TBST.
Detection: ECL Basic Kit (RM00020).
Negative control (NC): H4 protein.
Exposure time: 1 s.



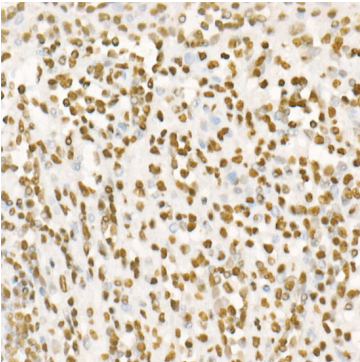
Dot-blot analysis of all sorts of peptides using DiMethyl-Histone H4-K20 Rabbit mAb (A22268) at 1:1000 dilution.



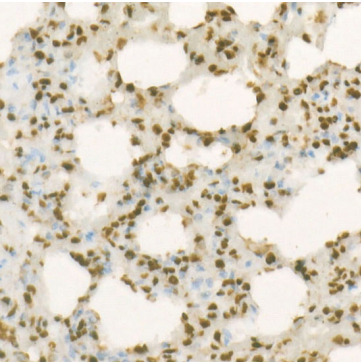
Immunofluorescence analysis of HeLa cells using DiMethyl-Histone H4-K20 Rabbit mAb (A22268) at dilution of 1:600 (40x lens).
Secondary antibody: Cy3-conjugated Goat anti-Rabbit IgG (H+L) (AS007) at 1:500 dilution. Blue: DAPI for nuclear staining.



Immunohistochemistry analysis of paraffin-embedded Human cervix cancer using DiMethyl-Histone H4-K20 Rabbit mAb (A22268) at dilution of 1:1000 (40x lens).
High pressure antigen retrieval performed with 0.01M Citrate buffer (pH 6.0) prior to IHC staining.



Immunohistochemistry analysis of paraffin-embedded Human spleen using DiMethyl-Histone H4-K20 Rabbit mAb (A22268) at dilution of 1:1000 (40x lens). High pressure antigen retrieval performed with 0.01M Citrate buffer (pH 6.0) prior to IHC staining.



Immunohistochemistry analysis of paraffin-embedded Rat lung using DiMethyl-Histone H4-K20 Rabbit mAb (A22268) at dilution of 1:1000 (40x lens). High pressure antigen retrieval performed with 0.01M Citrate buffer (pH 6.0) prior to IHC staining.