

# Ly-6G Rabbit mAb

Catalog No.: A22270

Recombinant

1 Publications

## Basic Information

### Observed MW

20-40kDa

### Calculated MW

14kDa

### Category

Primary antibody

### Applications

ELISA, WB, IHC-P

### Cross-Reactivity

Mouse

### CloneNo number

ARC5430

## Background

Located in external side of plasma membrane.

## Recommended Dilutions

WB 1:1000 - 1:5000

IHC-P 1:100 - 1:500

## Immunogen Information

### Gene ID

546644

### Swiss Prot

P35461

### Immunogen

Recombinant fusion protein containing a sequence corresponding to amino acids 27-105 of mouse Ly-6G (NP\_001297367.1).

### Synonyms

Gr1; Gr-1; Ly-6G

## Contact

☎ | 400-999-6126

✉ | [cn.market@abclonal.com.cn](mailto:cn.market@abclonal.com.cn)

🌐 | [www.abclonal.com.cn](http://www.abclonal.com.cn)

## Product Information

### Source

Rabbit

### Isotype

IgG

### Purification

Affinity purification

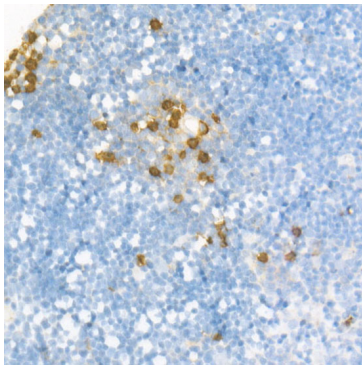
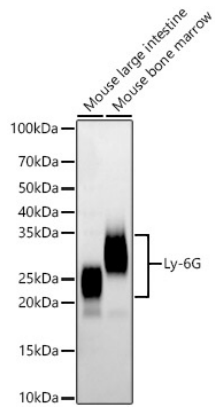
### Storage

Store at -20°C. Avoid freeze / thaw cycles.

Buffer: PBS with 0.05% proclin300, 0.05% BSA, 50% glycerol, pH7.3.

## Validation Data

---



Immunohistochemistry analysis of paraffin-embedded mouse thymus using Ly-6G Rabbit mAb (A22270) at dilution of 1:300(40x lens). Perform high pressure antigen retrieval with 10 mM citrate buffer pH 6.0 before commencing with IHC staining protocol.