

# IP6K1 Rabbit mAb

Catalog No.: A22272 **Recombinant**

## Basic Information

### Observed MW

60kDa

### Calculated MW

50kDa

### Category

Primary antibody

### Applications

ELISA, WB, IHC-P

### Cross-Reactivity

Human, Mouse, Rat

### CloneNo number

ARC56744

## Background

This gene encodes a member of the inositol phosphokinase family. The encoded protein may be responsible for the conversion of inositol hexakisphosphate (InsP6) to diphosphoinositol pentakisphosphate (InsP7/PP-InsP5). It may also convert 1,3,4,5,6-pentakisphosphate (InsP5) to PP-InsP4. Alternatively spliced transcript variants have been described.

## Recommended Dilutions

<b>WB</b>	1:1000 - 1:5000
<b>IHC-P</b>	1:50 - 1:200

## Immunogen Information

### Gene ID

9807

### Swiss Prot

Q92551

### Immunogen

Recombinant fusion protein containing a sequence corresponding to amino acids 1-220 of human IP6K1 (NP\_695005.1).

### Synonyms

PiUS; IHPK1; IP6K1

## Contact

☎ | 400-999-6126

✉ | [cn.market@abclonal.com.cn](mailto:cn.market@abclonal.com.cn)

🌐 | [www.abclonal.com.cn](http://www.abclonal.com.cn)

## Product Information

### Source

Rabbit

### Isotype

IgG

### Purification

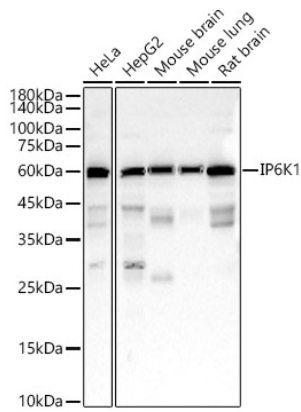
Affinity purification

### Storage

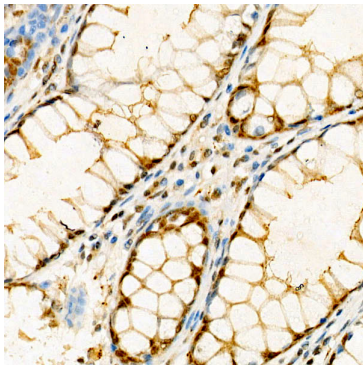
Store at -20°C. Avoid freeze / thaw cycles.

Buffer: PBS with 0.05% proclin300, 0.05% BSA, 50% glycerol, pH7.3.

## Validation Data



Western blot analysis of various lysates, using IP6K1 Rabbit mAb (A22272) at 1:2000 dilution.  
Secondary antibody: HRP Goat Anti-Rabbit IgG (H+L) (AS014) at 1:10000 dilution.  
Lysates/proteins: 25µg per lane.  
Blocking buffer: 3% nonfat dry milk in TBST.  
Detection: ECL Basic Kit (RM00020).  
Exposure time: 60s.



Immunohistochemistry analysis of paraffin-embedded human colon carcinoma using IP6K1 Rabbit mAb (A22272) at dilution of 1:100 (40x lens). Perform high pressure antigen retrieval with 10 mM citrate buffer pH 6.0 before commencing with IHC staining protocol.