

WEE1 Rabbit mAb

Catalog No.: A22275 **Recombinant**

Basic Information

Observed MW

Refer to figures

Calculated MW

72kDa

Category

Primary antibody

Applications

ELISA, IHC-P

Cross-Reactivity

Mouse

CloneNo number

ARC57004

Background

This gene encodes a nuclear protein, which is a tyrosine kinase belonging to the Ser/Thr family of protein kinases. This protein catalyzes the inhibitory tyrosine phosphorylation of CDC2/cyclin B kinase, and appears to coordinate the transition between DNA replication and mitosis by protecting the nucleus from cytoplasmically activated CDC2 kinase.

Recommended Dilutions

IHC-P 1:50 - 1:200

Immunogen Information

Gene ID

7465

Swiss Prot

P30291

Immunogen

A synthetic peptide corresponding to a sequence within amino acids 1-100 of human WEE1 (NP_003381.1).

Synonyms

WEE1A; WEE1hu; WEE1

Contact

☎ | 400-999-6126

✉ | cn.market@abclonal.com.cn

🌐 | www.abclonal.com.cn

Product Information

Source

Rabbit

Isotype

IgG

Purification

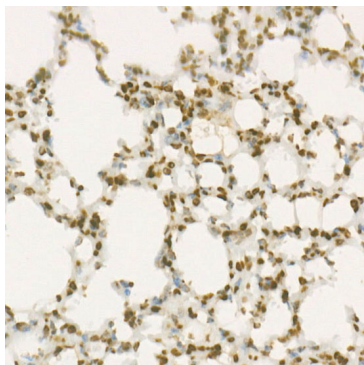
Affinity purification

Storage

Store at -20°C. Avoid freeze / thaw cycles.

Buffer: PBS with 0.05% proclin300, 0.05% BSA, 50% glycerol, pH7.3.

Validation Data



Immunohistochemistry analysis of paraffin-embedded mouse lung using WEE1 Rabbit mAb (A22275) at dilution of 1:100(40x lens). Perform high pressure antigen retrieval with 10 mM citrate buffer pH 6.0 before commencing with IHC staining protocol.