

# SDHC Rabbit mAb

Catalog No.: A22280 **Recombinant**

## Basic Information

### Observed MW

12kDa

### Calculated MW

19kDa

### Category

Primary antibody

### Applications

ELISA, WB, IHC-P, IF/ICC

### Cross-Reactivity

Human, Mouse, Rat

### CloneNo number

ARC55260

## Background

This gene encodes one of four nuclear-encoded subunits that comprise succinate dehydrogenase, also known as mitochondrial complex II, a key enzyme complex of the tricarboxylic acid cycle and aerobic respiratory chains of mitochondria. The encoded protein is one of two integral membrane proteins that anchor other subunits of the complex, which form the catalytic core, to the inner mitochondrial membrane. There are several related pseudogenes for this gene on different chromosomes. Mutations in this gene have been associated with paragangliomas. Alternatively spliced transcript variants have been described.

## Recommended Dilutions

<b>WB</b>	1:2000 - 1:20000
<b>IHC-P</b>	1:500 - 1:1000
<b>IF/ICC</b>	1:50 - 1:200

## Immunogen Information

### Gene ID

6391

### Swiss Prot

Q99643

### Immunogen

A synthetic peptide corresponding to a sequence within amino acids 1-100 of human SDHC (NP\_002992.1).

### Synonyms

CYBL; PGL3; QPS1; SDH3; CYB560; SDHC

## Contact

☎ | 400-999-6126

✉ | [cn.market@abclonal.com.cn](mailto:cn.market@abclonal.com.cn)

🌐 | [www.abclonal.com.cn](http://www.abclonal.com.cn)

## Product Information

### Source

Rabbit

### Isotype

IgG

### Purification

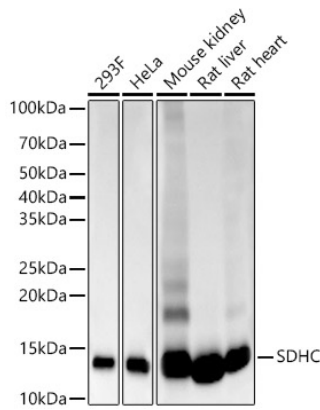
Affinity purification

### Storage

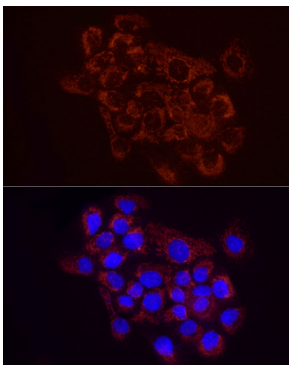
Store at -20°C. Avoid freeze / thaw cycles.

Buffer: PBS with 0.05% proclin300, 0.05% BSA, 50% glycerol, pH7.3.

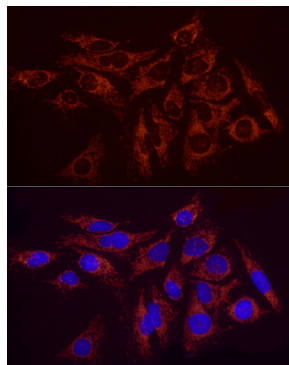
## Validation Data



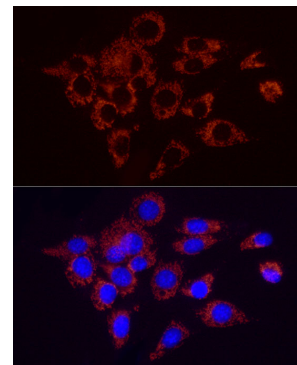
Western blot analysis of various lysates, using SDHC Rabbit mAb (A22280) at 1:20000 dilution. Secondary antibody: HRP Goat Anti-Rabbit IgG (H+L) (AS014) at 1:10000 dilution. Lysates/proteins: 25µg per lane. Blocking buffer: 3% nonfat dry milk in TBST. Detection: ECL Basic Kit (RM00020). Exposure time: 10s.



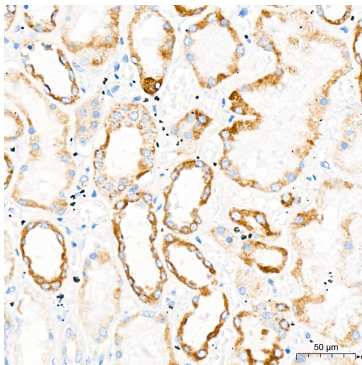
Immunofluorescence analysis of A431 cells using SDHC Rabbit mAb (A22280) at dilution of 1:100(40x lens). Secondary antibody: Cy3 Goat Anti-Rabbit IgG (H+L) (AS007) at 1:500 dilution. Blue: DAPI for nuclear staining.



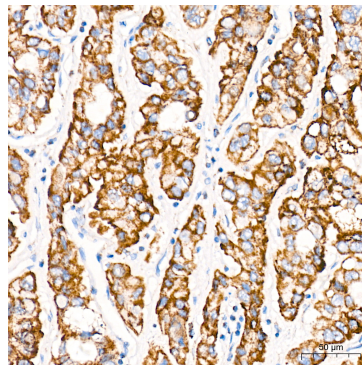
Immunofluorescence analysis of HeLa cells using SDHC Rabbit mAb (A22280) at dilution of 1:100(40x lens). Secondary antibody: Cy3 Goat Anti-Rabbit IgG (H+L) (AS007) at 1:500 dilution. Blue: DAPI for nuclear staining.



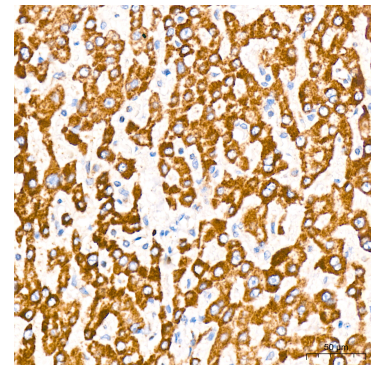
Immunofluorescence analysis of NIH/3T3 cells using SDHC Rabbit mAb (A22280) at dilution of 1:100(40x lens). Secondary antibody: Cy3 Goat Anti-Rabbit IgG (H+L) (AS007) at 1:500 dilution. Blue: DAPI for nuclear staining.



Immunohistochemistry analysis of SDHC in paraffin-embedded human kidney tissue using SDHC Rabbit mAb (A22280) at a dilution of 1:600 (40x lens). High pressure antigen retrieval was performed with 0.01 M citrate buffer (pH 6.0) prior to IHC staining.



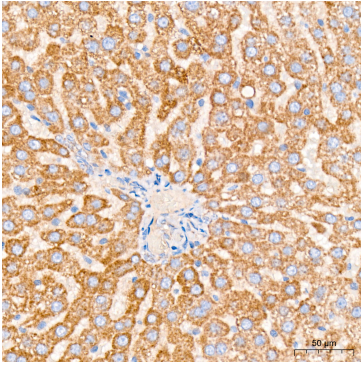
Immunohistochemistry analysis of SDHC in paraffin-embedded human liver cancer tissue using SDHC Rabbit mAb (A22280) at a dilution of 1:600 (40x lens). High pressure antigen retrieval was performed with 0.01 M citrate buffer (pH 6.0) prior to IHC staining.



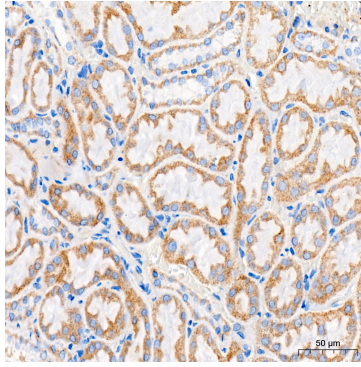
Immunohistochemistry analysis of SDHC in paraffin-embedded human liver tissue using SDHC Rabbit mAb (A22280) at a dilution of 1:600 (40x lens). High pressure antigen retrieval was performed with 0.01 M citrate buffer (pH 6.0) prior to IHC staining.

## Validation Data

---



Immunohistochemistry analysis of SDHC in paraffin-embedded mouse liver tissue using SDHC Rabbit mAb (A22280) at a dilution of 1:600 (40x lens). High pressure antigen retrieval was performed with 0.01 M citrate buffer (pH 6.0) prior to IHC staining.



Immunohistochemistry analysis of SDHC in paraffin-embedded rat kidney tissue using SDHC Rabbit mAb (A22280) at a dilution of 1:600 (40x lens). High pressure antigen retrieval was performed with 0.01 M citrate buffer (pH 6.0) prior to IHC staining.