

Pepsinogen II (PG II) Rabbit mAb

Catalog No.: A22282 **Recombinant**

Basic Information

Observed MW

Refer to figures

Calculated MW

42kDa

Category

Primary antibody

Applications

ELISA, IHC-P

Cross-Reactivity

Human, Mouse, Rat

CloneNo number

ARC57717

Background

This gene encodes an aspartic proteinase that belongs to the peptidase family A1. The encoded protein is a digestive enzyme that is produced in the stomach and constitutes a major component of the gastric mucosa. This protein is also secreted into the serum. This protein is synthesized as an inactive zymogen that includes a highly basic prosegment. This enzyme is converted into its active mature form at low pH by sequential cleavage of the prosegment that is carried out by the enzyme itself. Polymorphisms in this gene are associated with susceptibility to gastric cancers. Serum levels of this enzyme are used as a biomarker for certain gastric diseases including *Helicobacter pylori* related gastritis. Alternate splicing results in multiple transcript variants. A pseudogene of this gene is found on chromosome 1.

Recommended Dilutions

IHC-P 1:50 - 1:200

Immunogen Information

Gene ID

5225

Swiss Prot

P20142

Immunogen

Recombinant fusion protein containing a sequence corresponding to amino acids 1-388 of human Pepsinogen II (PG II) (NP_002621.1).

Synonyms

PEPC; PGII; Pepsinogen II (PG II)

Contact

☎ | 400-999-6126

✉ | cn.market@abclonal.com.cn

🌐 | www.abclonal.com.cn

Product Information

Source

Rabbit

Isotype

IgG

Purification

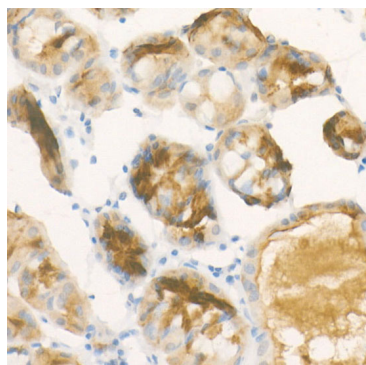
Affinity purification

Storage

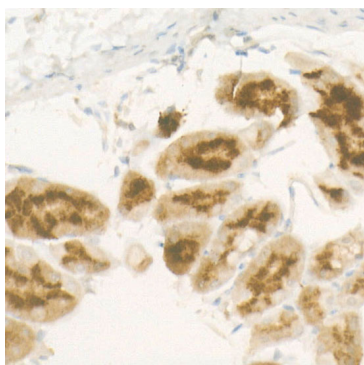
Store at -20°C. Avoid freeze / thaw cycles.

Buffer: PBS with 0.05% proclin300, 0.05% BSA, 50% glycerol, pH7.3.

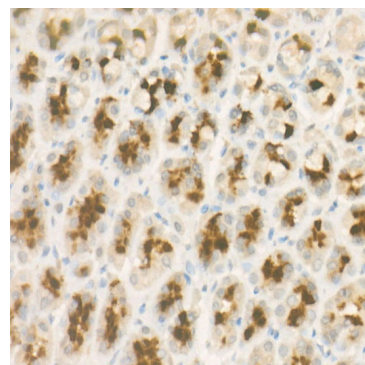
Validation Data



Immunohistochemistry analysis of paraffin-embedded human stomach using Pepsinogen II (PG II) Rabbit mAb (A22282) at dilution of 1:100(40x lens).Perform high pressure antigen retrieval with 10 mM citrate buffer pH 6.0 before commencing with IHC staining protocol.



Immunohistochemistry analysis of paraffin-embedded mouse stomach using Pepsinogen II (PG II) Rabbit mAb (A22282) at dilution of 1:100(40x lens).Perform high pressure antigen retrieval with 10 mM citrate buffer pH 6.0 before commencing with IHC staining protocol.



Immunohistochemistry analysis of paraffin-embedded rat stomach using Pepsinogen II (PG II) Rabbit mAb (A22282) at dilution of 1:100(40x lens).Perform high pressure antigen retrieval with 10 mM citrate buffer pH 6.0 before commencing with IHC staining protocol.