

Lsh/HELLS Rabbit mAb

Catalog No.: A22289 **Recombinant**

Basic Information

Observed MW

97kDa

Calculated MW

97kDa

Category

Primary antibody

Applications

ELISA, WB, IHC-P

Cross-Reactivity

Human, Mouse, Rat

CloneNo number

ARC56706

Background

This gene encodes a lymphoid-specific helicase. Other helicases function in processes involving DNA strand separation, including replication, repair, recombination, and transcription. This protein is thought to be involved with cellular proliferation and may play a role in leukemogenesis. Alternatively spliced transcript variants encoding different isoforms have been identified.

Recommended Dilutions

WB	1:2000 - 1:20000
IHC-P	1:50 - 1:200

Immunogen Information

Gene ID

3070

Swiss Prot

Q9NRZ9

Immunogen

Recombinant fusion protein containing a sequence corresponding to amino acids 614-838 of human Lsh/HELLS (NP_060533.2).

Synonyms

LSH; ICF4; PASG; SMARCA6; Nbla10143; Lsh/HELLS

Contact

☎ | 400-999-6126

✉ | cn.market@abclonal.com.cn

🌐 | www.abclonal.com.cn

Product Information

Source

Rabbit

Isotype

IgG

Purification

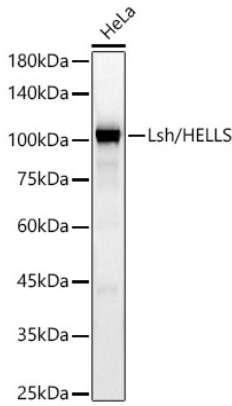
Affinity purification

Storage

Store at -20°C. Avoid freeze / thaw cycles.

Buffer: PBS with 0.05% proclin300, 0.05% BSA, 50% glycerol, pH7.3.

Validation Data



Western blot analysis of lysates from HeLa cells, using Lsh/HELLS Rabbit mAb (A22289) at 1:20000 dilution.

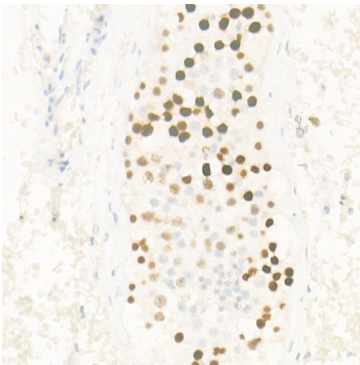
Secondary antibody: HRP Goat Anti-Rabbit IgG (H+L) (AS014) at 1:10000 dilution.

Lysates/proteins: 25µg per lane.

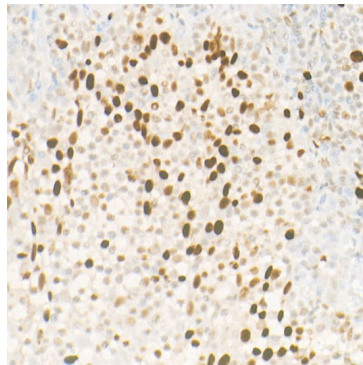
Blocking buffer: 3% nonfat dry milk in TBST.

Detection: ECL Basic Kit (RM00020).

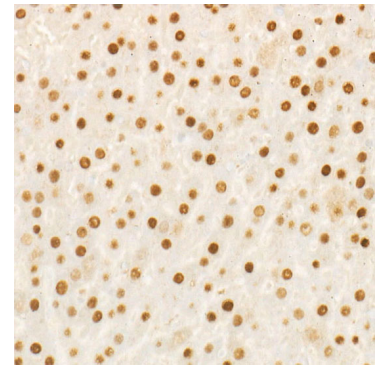
Exposure time: 30s.



Immunohistochemistry analysis of paraffin-embedded human testis using Lsh/HELLS Rabbit mAb (A22289) at dilution of 1:200(40x lens). Perform high pressure antigen retrieval with 10 mM citrate buffer pH 6.0 before commencing with IHC staining protocol.



Immunohistochemistry analysis of paraffin-embedded human tonsil using Lsh/HELLS Rabbit mAb (A22289) at dilution of 1:200(40x lens). Perform high pressure antigen retrieval with 10 mM citrate buffer pH 6.0 before commencing with IHC staining protocol.



Immunohistochemistry analysis of paraffin-embedded rat liver using Lsh/HELLS Rabbit mAb (A22289) at dilution of 1:200(40x lens). Perform high pressure antigen retrieval with 10 mM citrate buffer pH 6.0 before commencing with IHC staining protocol.