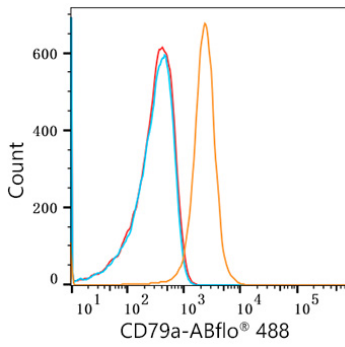
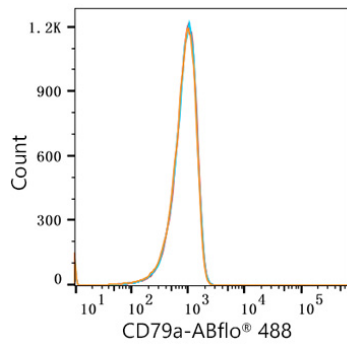


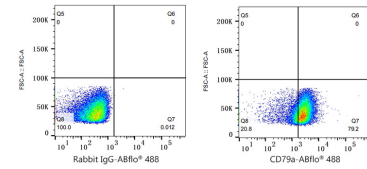
Validation Data



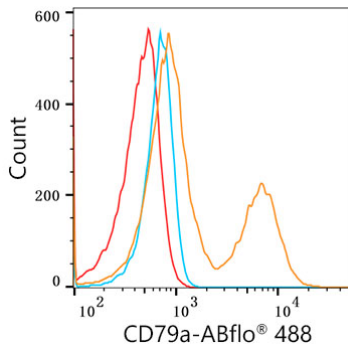
Flow cytometry: 1×10^6 Daudi cells were intracellularly-stained with ABflo® 488 Rabbit anti-Human CD79a mAb(A22300,5 μ l/Test,orange line) or ABflo® 488 Rabbit IgG isotype control (A22069,5 μ l/Test,blue line).Non-fluorescently stained Daudi cells was used as blank control (red line).



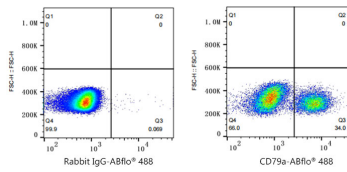
Flow cytometry: 1×10^6 C2C12 cells(negative control) were intracellularly-stained with ABflo® 488 Rabbit anti-Human CD79a mAb(A22300,5 μ l/Test,orange line) or ABflo® 488 Rabbit IgG isotype control (A22069,5 μ l/Test,blue line).Non-fluorescently stained C2C12 cells was used as blank control (red line).



Flow cytometry: 1×10^6 Daudi cells were intracellularly-stained with ABflo® 488 Rabbit IgG isotype control (A22069,5 μ l/Test,left) or ABflo® 488 Rabbit anti-Human CD79a mAb(A22300,5 μ l/Test,right).



Flow cytometry: 1×10^6 Human PBMC were intracellularly-stained with ABflo® 488 Rabbit anti-Human CD79a mAb(A22300,5 μ l/Test,orange line) or ABflo® 488 Rabbit IgG isotype control (A22069,5 μ l/Test,blue line).Non-fluorescently stained Human PBMC was used as blank control (red line).



Flow cytometry: 1×10^6 Human PBMC cells were intracellularly-stained with ABflo® 488 Rabbit IgG isotype control (A22069,5 μ l/Test,left) or ABflo® 488 Rabbit anti-Human CD79a mAb(A22300,5 μ l/Test,right).