

ABflo® 488 Rabbit anti-Human PD-L1/CD274 mAb

Catalog No.: A22304 **1 Publications**

Basic Information

Observed MW

Refer to figures

Calculated MW

33kDa

Category

Primary antibody

Applications

FC

Cross-Reactivity

Human

CloneNo number

ARC5128-01-ABf488

Conjugate

ABflo® 488. Ex:491nm. Em:516nm.

Recommended Dilutions

FC	5 µl per 10 ⁶ cells in 100 µl volume
-----------	--

Background

This gene encodes an immune inhibitory receptor ligand that is expressed by hematopoietic and non-hematopoietic cells, such as T cells and B cells and various types of tumor cells. The encoded protein is a type I transmembrane protein that has immunoglobulin V-like and C-like domains. Interaction of this ligand with its receptor inhibits T-cell activation and cytokine production. During infection or inflammation of normal tissue, this interaction is important for preventing autoimmunity by maintaining homeostasis of the immune response. In tumor microenvironments, this interaction provides an immune escape for tumor cells through cytotoxic T-cell inactivation. Expression of this gene in tumor cells is considered to be prognostic in many types of human malignancies, including colon cancer and renal cell carcinoma. Alternative splicing results in multiple transcript variants.

Immunogen Information

Gene ID

29126

Swiss Prot

Q9NZQ7

Immunogen

Recombinant fusion protein containing a sequence corresponding to amino acids 1-290 of human PD-L1/CD274 (Q9NZQ7)


Synonyms

B7-H; B7H1; PDL1; PD-L1; hPD-L1; PDCD1L1; PDCD1LG1

Contact

	400-999-6126
--	--------------

	cn.market@abclonal.com.cn
--	---------------------------

	www.abclonal.com.cn
--	---------------------

Product Information

Source

Rabbit

Isotype

IgG

Purification

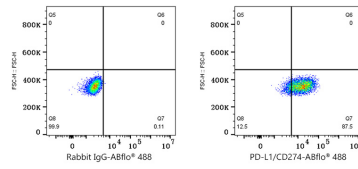
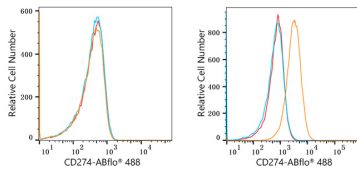
Affinity purification

Storage

Store at 2-8°C. Avoid freeze.

Buffer: PBS with 0.03% proclin300,0.2% BSA,pH7.3.

Validation Data



Flow cytometry: 1×10^6 K-562 cells (negative control, left) and MDA-MB-231 cells (right) were surface-stained with ABflo® 488 Rabbit anti-Human PD-L1/CD274 mAb (A22304, 2 $\mu\text{g}/\text{mL}$, orange line) or ABflo® 488 Rabbit IgG isotype control (A22069, 2 $\mu\text{g}/\text{mL}$, blue line). Non-fluorescently stained cells were used as blank control (red line).

Flow cytometry: 1×10^6 NCI-H460 cells treated with IFN- γ (RP01038, 100 ng/mL) were surface-stained with ABflo® 488 Rabbit IgG isotype control (A22069, 5 $\mu\text{l}/\text{Test}$, left) or ABflo® 488 Rabbit anti-Human PD-L1/CD274 mAb (A22304, 5 $\mu\text{l}/\text{Test}$, right).