

ABflo® 488 Rabbit anti-Human CD225/IFITM1 mAb

Catalog No.: A22310

Basic Information

Observed MW

Calculated MW

14kDa

Category

Primary antibody

Applications

IF/ICC,FC (intra)

Cross-Reactivity

Human

CloneNo number

ARC55310-ABf488

Conjugate

ABflo® 488. Ex:491nm. Em:516nm.

Recommended Dilutions

IF/ICC 1:50 - 1:200

FC (intra) 5 µl per 10⁶ cells in
100 µl volume

Background

Interferon-induced transmembrane (IFITM) proteins are a family of interferon induced antiviral proteins. The family contains five members, including IFITM1, IFITM2 and IFITM3 that belong to the CD225 superfamily. The protein encoded by this gene restricts cellular entry by diverse viral pathogens, such as influenza A virus, Ebola virus and Sars-CoV-2.

Immunogen Information

Gene ID

8519

Swiss Prot

P13164

Immunogen

Recombinant fusion protein containing a sequence within amino acids 1-80 of human CD225/IFITM1 (NP_003632.4).

Synonyms

9-27; CD225; IFI17; LEU13; DSPA2a

Contact

☎ | 400-999-6126

✉ | cn.market@abclonal.com.cn

🌐 | www.abclonal.com.cn

Product Information

Source

Rabbit

Isotype

IgG

Purification

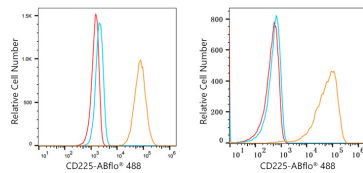
Affinity purification

Storage

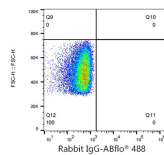
Store at 2-8°C. Avoid freeze.

Buffer: PBS with 0.03% proclin300,0.2% BSA,pH7.3.

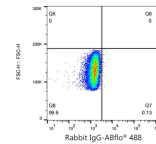
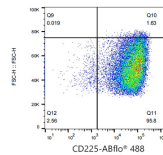
Validation Data



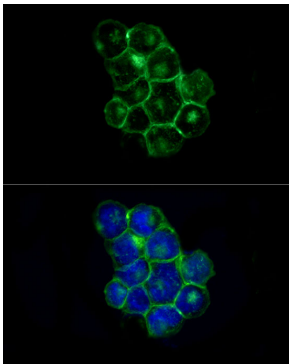
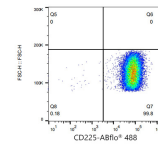
Flow cytometry: 1×10^6 U-251MG cells (Low Expression, left) and K-562 cells (right) were intracellularly-stained with ABflo® 488 Rabbit anti-Human CD225/IFITM1 mAb (A22310, 2 $\mu\text{g}/\text{mL}$, orange line) or ABflo® 488 Rabbit IgG isotype control (A22069, 2 $\mu\text{g}/\text{mL}$, blue line). Non-fluorescently stained cells was used as blank control (red line).



Flow cytometry: 1×10^6 K-562 cells were intracellularly-stained with ABflo® 488 Rabbit IgG isotype control (A22069, 5 $\mu\text{l}/\text{Test}$, left) or ABflo® 488 Rabbit anti-Human CD225/IFITM1 mAb (A22310, 5 $\mu\text{l}/\text{Test}$, right).



Flow cytometry: 1×10^6 U-251MG cells (Low Expression) were intracellularly-stained with ABflo® 488 Rabbit IgG isotype control (A22069, 5 $\mu\text{l}/\text{Test}$, left) or ABflo® 488 Rabbit anti-Human CD225/IFITM1 mAb (A22310, 5 $\mu\text{l}/\text{Test}$, right).



Immunofluorescence analysis of K-562 cells using ABflo® 488 Rabbit anti-Human CD225/IFITM1 mAb (A22310) at dilution of 1:50 (40x lens). Secondary antibody: Cy3 Goat Anti-Rabbit IgG (H+L) (AS007) at 1:500 dilution. Blue: DAPI for nuclear staining.