

[KO Validated] Smad1 Rabbit mAb

Catalog No.: A22326 **KO** **Validated** **Recombinant**

Basic Information

Observed MW

60kDa

Calculated MW

52kDa

Category

Primary antibody

Applications

WB, IHC-P, IP, ELISA

Cross-Reactivity

Human, Mouse

CloneNo number

ARC52106

Background

The protein encoded by this gene belongs to the SMAD, a family of proteins similar to the gene products of the Drosophila gene 'mothers against decapentaplegic' (Mad) and the C. elegans gene Sma. SMAD proteins are signal transducers and transcriptional modulators that mediate multiple signaling pathways. This protein mediates the signals of the bone morphogenetic proteins (BMPs), which are involved in a range of biological activities including cell growth, apoptosis, morphogenesis, development and immune responses. In response to BMP ligands, this protein can be phosphorylated and activated by the BMP receptor kinase. The phosphorylated form of this protein forms a complex with SMAD4, which is important for its function in the transcription regulation. This protein is a target for SMAD-specific E3 ubiquitin ligases, such as SMURF1 and SMURF2, and undergoes ubiquitination and proteasome-mediated degradation. Alternatively spliced transcript variants encoding the same protein have been observed.

Recommended Dilutions

WB 1:500 - 1:1000**IHC-P** 1:50 - 1:200**IP** 0.5µg-4µg antibody for
400µg-600µg extracts of
whole cells**ELISA** Recommended starting
concentration is 1 µg/mL.
Please optimize the
concentration based on
your specific assay
requirements.

Immunogen Information

Gene ID

4086

Swiss Prot

Q15797

Immunogen

Recombinant protein (or fragment). This information is considered to be commercially sensitive.

Synonyms

BSP1; JV41; BSP-1; JV4-1; MADH1; MADR1; d1

Product Information

Source

Rabbit

Isotype

IgG

Purification

Affinity purification

Storage

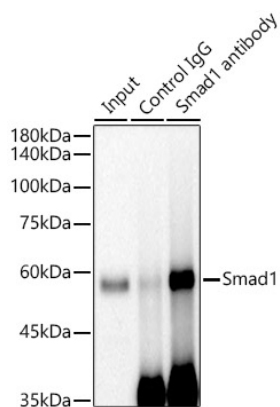
Store at -20°C. Avoid freeze / thaw cycles.

Buffer: PBS containing 50% glycerol and 0.05% BSA, preserved with proclin300 or sodium azide (as specified on the Certificate of Analysis), pH 7.3.

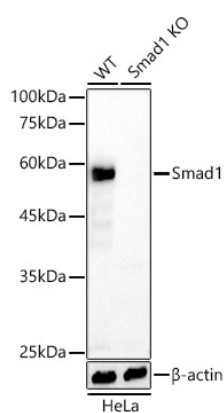
Contact

 | 400-999-6126 | cn.market@abclonal.com.cn | www.abclonal.com.cn

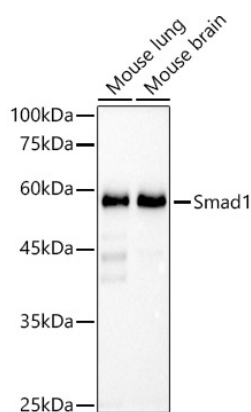
Validation Data



Immunoprecipitation analysis of 600 µg extracts of Mouse lung using 3 µg Smad1 antibody (A22326). Western blot was performed from the immunoprecipitate using Smad1 antibody (A22326) at a dilution of 1:1000.

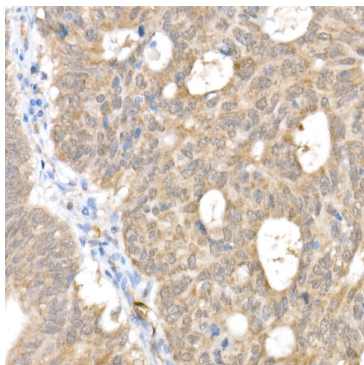


Western blot analysis of lysates from wild type(WT) and Smad1 knockout (KO) HeLa cells, using [KO Validated] Smad1 Rabbit mAb (A22326) at 1:1000 dilution.
Secondary antibody: HRP-conjugated Goat anti-Rabbit IgG (H+L) (AS014) at 1:10000 dilution.
Lysates/proteins: 25µg per lane.
Blocking buffer: 3% nonfat dry milk in TBST.
Detection: ECL Basic Kit (RM00020).
Exposure time: 180s.



Western blot analysis of various lysates using [KO Validated] Smad1 Rabbit mAb (A22326) at 1:1000 dilution.
Secondary antibody: HRP-conjugated Goat anti-Rabbit IgG (H+L) (AS014) at 1:10000 dilution.
Lysates/proteins: 25µg per lane.
Blocking buffer: 3% nonfat dry milk in TBST.
Detection: ECL Basic Kit (RM00020).
Exposure time: 90s.

Validation Data



Immunohistochemistry analysis of paraffin-embedded Human colon carcinoma using [KO Validated] Smad1 Rabbit mAb (A22326) at dilution of 1:100 (40x lens). High pressure antigen retrieval performed with 0.01M Citrate buffer (pH 6.0) prior to IHC staining.