

MMP13 Rabbit mAb

Catalog No.: A22334 **Recombinant**

Basic Information

Observed MW

Refer to figures

Calculated MW

54kDa

Category

Primary antibody

Applications

ELISA, IF/ICC

Cross-Reactivity

Human

CloneNo number

ARC51250

Background

This gene encodes a member of the peptidase M10 family of matrix metalloproteinases (MMPs). Proteins in this family are involved in the breakdown of extracellular matrix in normal physiological processes, such as embryonic development, reproduction, and tissue remodeling, as well as in disease processes, such as arthritis and metastasis. The encoded preproprotein is proteolytically processed to generate the mature protease. This protease cleaves type II collagen more efficiently than types I and III. It may be involved in articular cartilage turnover and cartilage pathophysiology associated with osteoarthritis. Mutations in this gene are associated with metaphyseal anadysplasia. This gene is part of a cluster of MMP genes on chromosome 11.

Recommended Dilutions

IF/ICC 1:50 - 1:200

Immunogen Information

Gene ID

4322

Swiss Prot

P45452

Immunogen

Recombinant fusion protein containing a sequence corresponding to amino acids 104-272 of human MMP13 (NP_002418.1).

Synonyms

CLG3; MDST; MANDP1; MMP-13; MMP13

Contact

☎ | 400-999-6126

✉ | cn.market@abclonal.com.cn

🌐 | www.abclonal.com.cn

Product Information

Source

Rabbit

Isotype

IgG

Purification

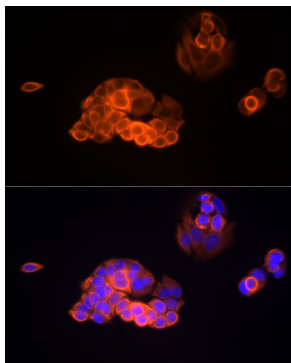
Affinity purification

Storage

Store at -20°C. Avoid freeze / thaw cycles.

Buffer: PBS with 0.05% proclin300, 0.05% BSA, 50% glycerol, pH7.3.

Validation Data



Immunofluorescence analysis of MCF7 cells using MMP13 Rabbit mAb (A22334) at dilution of 1:100 (40x lens). Blue: DAPI for nuclear staining.