

α -Actin-1 (α -SMA) Rabbit mAb

Catalog No.: A2235

Recombinant

5 Publications

Basic Information

Observed MW

42kDa

Calculated MW

42kDa

Category

Primary antibody

Applications

WB, IHC-P, IF/ICC, ELISA

Cross-Reactivity

Human, Mouse, Rat

CloneNo number

ARC1912

Background

The product encoded by this gene belongs to the actin family of proteins, which are highly conserved proteins that play a role in cell motility, structure and integrity. Alpha, beta and gamma actin isoforms have been identified, with alpha actins being a major constituent of the contractile apparatus, while beta and gamma actins are involved in the regulation of cell motility. This actin is an alpha actin that is found in skeletal muscle. Mutations in this gene cause a variety of myopathies, including nemaline myopathy, congenital myopathy with excess of thin myofilaments, congenital myopathy with cores, and congenital myopathy with fiber-type disproportion, diseases that lead to muscle fiber defects with manifestations such as hypotonia.

Recommended Dilutions

WB	1:1000 - 1:6000
-----------	-----------------

IHC-P	1:100 - 1:1000
--------------	----------------

IF/ICC	1:100 - 1:800
---------------	---------------

ELISA	Recommended starting concentration is 1 μ g/mL. Please optimize the concentration based on your specific assay requirements.
--------------	--

Immunogen Information

Gene ID

58

Swiss Prot

P68133

Immunogen

A synthetic peptide corresponding to a sequence within amino acids 278-377 of human α -Actin-1 (ACTA1) (P68133).

Synonyms

ACTA; ACTA1; CFTD; MPFD; NEM1; NEM2; NEM3; SHPM; CFTD1; CFTDM; CMYP2A; CMYP2B; CMYP2C; α -Actin-1 (α -SMA)

Contact

		400-999-6126
--	--	--------------

		cn.market@abclonal.com.cn
--	--	---------------------------

		www.abclonal.com.cn
--	--	---------------------

Product Information

Source

Rabbit

Isotype

IgG

Purification

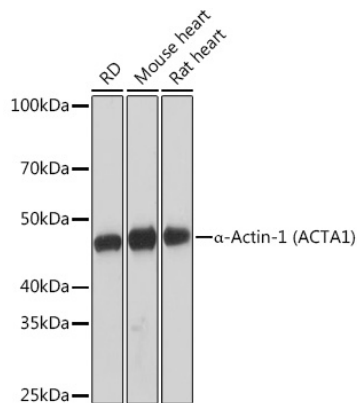
Affinity purification

Storage

Store at -20°C. Avoid freeze / thaw cycles.

Buffer: PBS with 0.02% sodium azide, 0.05% BSA, 50% glycerol, pH7.3.

Validation Data



Western blot analysis of lysates from various s, using α -Actin-1 (α -SMA) Rabbit mAb (A2235) at 1:1000 dilution.

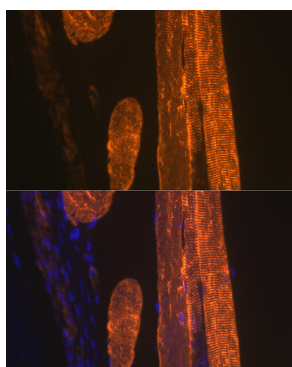
Secondary antibody: HRP-conjugated Goat anti-Rabbit IgG (H+L) (AS014) at 1:10000 dilution.

Lysates/proteins: 25 μ g per lane.

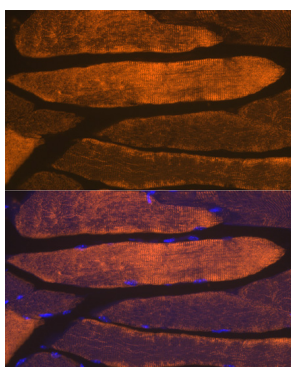
Blocking buffer: 3% nonfat dry milk in TBST.

Detection: ECL Basic Kit (RM00020).

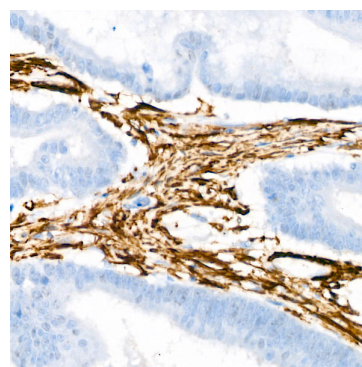
Exposure time: 1s.



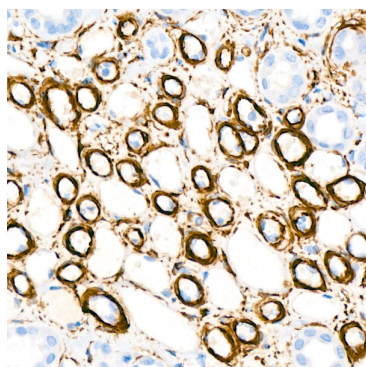
Immunofluorescence analysis of paraffin-embedded rat skeletal muscle using α -Actin-1 (ACTA1) Rabbit mAb (A2235) at dilution of 1:100 (40x lens). Secondary antibody: Cy3-conjugated Goat anti-Rabbit IgG (H+L) (AS007) at 1:500 dilution. Blue: DAPI for nuclear staining.



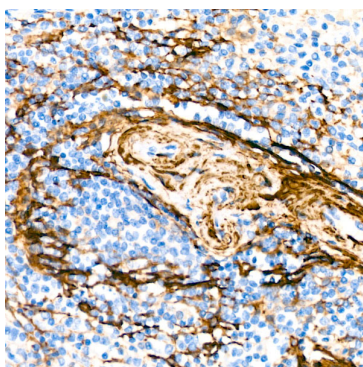
Immunofluorescence analysis of paraffin-embedded mouse skeletal muscle using α -Actin-1 (ACTA1) Rabbit mAb (A2235) at dilution of 1:100 (40x lens). Secondary antibody: Cy3-conjugated Goat anti-Rabbit IgG (H+L) (AS007) at 1:500 dilution. Blue: DAPI for nuclear staining.



Immunohistochemistry analysis of paraffin-embedded Human colon carcinoma using α -Actin-1 (ACTA1) Rabbit mAb (A2235) at dilution of 1:100 (40x lens). Microwave antigen retrieval performed with 0.01M Tris/EDTA Buffer (pH 9.0) prior to IHC staining.



Immunohistochemistry analysis of paraffin-embedded Human kidney using α -Actin-1 (ACTA1) Rabbit mAb (A2235) at dilution of 1:100 (40x lens). Microwave antigen retrieval performed with 0.01M Tris/EDTA Buffer (pH 9.0) prior to IHC staining.



Immunohistochemistry analysis of paraffin-embedded Human spleen using α -Actin-1 (ACTA1) Rabbit mAb (A2235) at dilution of 1:100 (40x lens). Microwave antigen retrieval performed with 0.01M Tris/EDTA Buffer (pH 9.0) prior to IHC staining.