

COPB2 Rabbit mAb

Catalog No.: A22381 **Recombinant**

Basic Information

Observed MW

102kDa

Calculated MW

102kDa

Category

Primary antibody

Applications

ELISA, WB, IF/ICC

Cross-Reactivity

Human

CloneNo number

ARC52631

Background

The Golgi coatomer complex (see MIM 601924) constitutes the coat of nonclathrin-coated vesicles and is essential for Golgi budding and vesicular trafficking. It consists of 7 protein subunits, including COPB2.

Recommended Dilutions

WB 1:2000 - 1:20000

IF/ICC 1:50 - 1:200

Immunogen Information

Gene ID

9276

Swiss Prot

P35606

Immunogen

Recombinant fusion protein containing a sequence corresponding to amino acids 657-906 of human COPB2 (NP_004757.1).

Synonyms

OPDD; MCPH19; beta'-COP; COPB2

Contact

☎ | 400-999-6126

✉ | cn.market@abclonal.com.cn

🌐 | www.abclonal.com.cn

Product Information

Source

Rabbit

Isotype

IgG

Purification

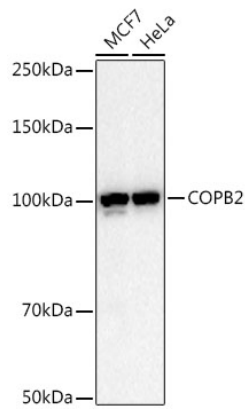
Affinity purification

Storage

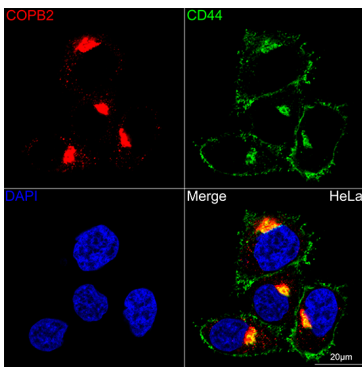
Store at -20°C. Avoid freeze / thaw cycles.

Buffer: PBS with 0.05% proclin300, 0.05% BSA, 50% glycerol, pH7.3.

Validation Data



Western blot analysis of various lysates, using COPB2 antibody (A22381) at 1:20000 dilution.
Secondary antibody: HRP Goat Anti-Rabbit IgG (H+L) (AS014) at 1:10000 dilution.
Lysates/proteins: 25µg per lane.
Blocking buffer: 3% nonfat dry milk in TBST.
Detection: ECL Basic Kit (RM00020).
Exposure time: 10s.



Confocal imaging of HeLa cells using COPB2 Rabbit mAb (A22381, dilution 1:100) (Red). The cells were counterstained with CD44 Rabbit mAb (A21919, dilution 1:200) (Green). DAPI was used for nuclear staining (blue). Objective: 60x.