

# CR2/CD21 Rabbit mAb

Catalog No.: A22401 **Recombinant**

## Basic Information

### Observed MW

153kDa

### Calculated MW

113kDa

### Category

Primary antibody

### Applications

ELISA, WB, IHC-P

### Cross-Reactivity

Human

### CloneNo number

ARC53765

## Background

This gene encodes a membrane protein, which functions as a receptor for Epstein-Barr virus (EBV) binding on B and T lymphocytes. Genetic variations in this gene are associated with susceptibility to systemic lupus erythematosus type 9 (SLEB9). Alternatively spliced transcript variants encoding different isoforms have been found for this gene.

## Recommended Dilutions

WB	1:1000 - 1:5000
IHC-P	1:50 - 1:200

## Immunogen Information

### Gene ID

1380

### Swiss Prot

P20023

### Immunogen

A synthetic peptide corresponding to a sequence within amino acids 934-1033 of human CR2/CD21 (NP\_001868.2).

### Synonyms

CR; C3DR; CD21; CVID7; SLEB9; CR2/CD21

## Contact

☎ | 400-999-6126

✉ | [cn.market@abclonal.com.cn](mailto:cn.market@abclonal.com.cn)

🌐 | [www.abclonal.com.cn](http://www.abclonal.com.cn)

## Product Information

### Source

Rabbit

### Isotype

IgG

### Purification

Affinity purification

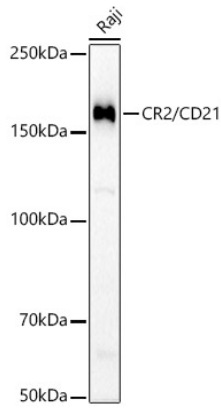
### Storage

Store at -20°C. Avoid freeze / thaw cycles.

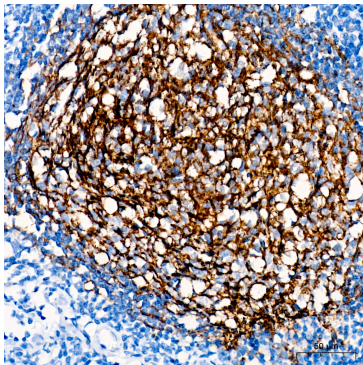
Buffer: PBS with 0.05% proclin300, 0.05% BSA, 50% glycerol, pH7.3.

## Validation Data

---



Western blot analysis of lysates from Raji cells, using CR2/CD21 Rabbit mAb (A22401) at 1:2000 dilution.  
Secondary antibody: HRP Goat Anti-Rabbit IgG (H+L) (AS014) at 1:10000 dilution.  
Lysates/proteins: 25µg per lane.  
Blocking buffer: 3% nonfat dry milk in TBST.  
Detection: ECL Basic Kit (RM00020).  
Exposure time: 180s.



Immunohistochemistry analysis of paraffin-embedded Human tonsil tissue using CR2/CD21 Rabbit mAb (A22401) at a dilution of 1:200 (40x lens). High pressure antigen retrieval performed with 0.01M Citrate Buffer(pH 6.0) prior to IHC staining.