

# Alpha-Fetoprotein (AFP) Rabbit mAb

Catalog No.: A22406 **Recombinant**

## Basic Information

**Observed MW**

69kDa

**Calculated MW**

69kDa

**Category**

Primary antibody

**Applications**

ELISA, WB, IF/ICC

**Cross-Reactivity**

Human

**CloneNo number**

ARC54859

## Background

This gene encodes alpha-fetoprotein, a major plasma protein produced by the yolk sac and the liver during fetal life. Alpha-fetoprotein expression in adults is often associated with hepatocarcinoma and with teratoma, and has prognostic value for managing advanced gastric cancer. However, hereditary persistence of alpha-fetoprotein may also be found in individuals with no obvious pathology. The protein is thought to be the fetal counterpart of serum albumin, and the alpha-fetoprotein and albumin genes are present in tandem in the same transcriptional orientation on chromosome 4. Alpha-fetoprotein is found in monomeric as well as dimeric and trimeric forms, and binds copper, nickel, fatty acids and bilirubin. The level of alpha-fetoprotein in amniotic fluid is used to measure renal loss of protein to screen for spina bifida and anencephaly.

## Recommended Dilutions

**WB** 1:1000 - 1:5000**IF/ICC** 1:50 - 1:200

## Immunogen Information

**Gene ID**

174

**Swiss Prot**

P02771

**Immunogen**

Recombinant fusion protein containing a sequence corresponding to amino acids 19-609 of human Alpha-Fetoprotein (AFP) (NP\_001125.1).

**Synonyms**

AFPD; FETA; HPAFP; Alpha-Fetoprotein (AFP)

## Contact

 | 400-999-6126 | [cn.market@abclonal.com.cn](mailto:cn.market@abclonal.com.cn) | [www.abclonal.com.cn](http://www.abclonal.com.cn)

## Product Information

**Source**

Rabbit

**Isotype**

IgG

**Purification**

Affinity purification

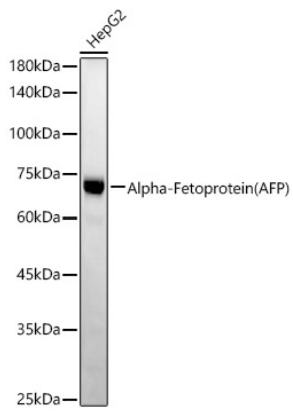
**Storage**

Store at -20°C. Avoid freeze / thaw cycles.

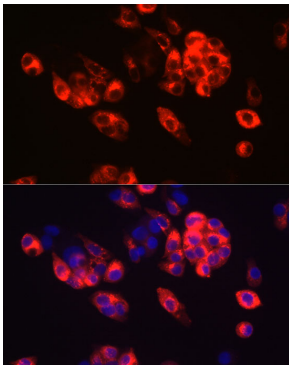
Buffer: PBS with 0.05% proclin300, 0.05% BSA, 50% glycerol, pH7.3.

## Validation Data

---



Western blot analysis of HepG2, using Alpha-Fetoprotein (AFP) antibody (A22406) at 1:2000 dilution.  
Secondary antibody: HRP Goat Anti-Rabbit IgG (H+L) (AS014) at 1:10000 dilution.  
Lysates/proteins: 25µg per lane.  
Blocking buffer: 3% nonfat dry milk in TBST.  
Detection: ECL Basic Kit (RM00020).  
Exposure time: 60s.



Immunofluorescence analysis of HepG2 using Alpha-Fetoprotein (AFP) Rabbit mAb (A22406) at dilution of 1:100 (40x lens). Blue: DAPI for nuclear staining.