

Arginase 1 (ARG1) Rabbit mAb

Catalog No.: A22410 **Recombinant**

Basic Information

Observed MW

40kDa

Calculated MW

35kDa

Category

Primary antibody

Applications

ELISA, WB, IHC-P, IF/ICC

Cross-Reactivity

Human

CloneNo number

ARC5014-08

Background

Arginase catalyzes the hydrolysis of arginine to ornithine and urea. At least two isoforms of mammalian arginase exist (types I and II) which differ in their tissue distribution, subcellular localization, immunologic crossreactivity and physiologic function. The type I isoform encoded by this gene, is a cytosolic enzyme and expressed predominantly in the liver as a component of the urea cycle. Inherited deficiency of this enzyme results in argininemia, an autosomal recessive disorder characterized by hyperammonemia. Two transcript variants encoding different isoforms have been found for this gene.

Recommended Dilutions

WB	1:500 - 1:1000
IHC-P	1:50 - 1:200
IF/ICC	1:50 - 1:200

Immunogen Information

Gene ID

383

Swiss Prot

P05089

Immunogen

Recombinant fusion protein containing a sequence corresponding to amino acids 1-322 of Arginase 1 (ARG1) (NP_000036.2).

Synonyms

ARG1; arginase-1; Arginase 1 (ARG1)

Contact

	400-999-6126
	cn.market@abclonal.com.cn
	www.abclonal.com.cn

Product Information

Source

Rabbit

Isotype

IgG

Purification

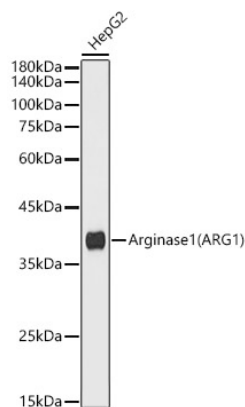
Affinity purification

Storage

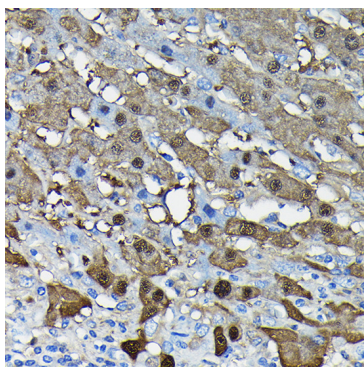
Store at -20°C. Avoid freeze / thaw cycles.

Buffer: PBS with 0.01% thimerosal, 0.05% BSA, 50% glycerol, pH7.3.

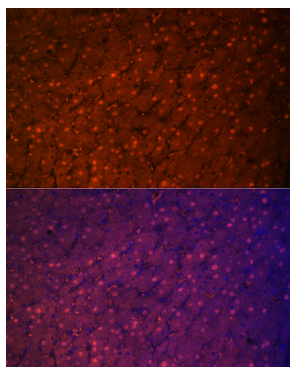
Validation Data



Western blot analysis of HepG2, using Arginase1(ARG1) antibody (A22410) at 1:1000 dilution.
Secondary antibody: HRP Goat Anti-Rabbit IgG (H+L) (AS014) at 1:10000 dilution.
Lysates/proteins: 25µg per lane.
Blocking buffer: 3% nonfat dry milk in TBST.
Detection: ECL Basic Kit (RM00020).
Exposure time: 180s.



Immunohistochemistry analysis of paraffin-embedded human liver cancer Arginase 1 (ARG1) Rabbit mAb (A22410) at dilution of 1:100(40x lens). Perform microwave antigen retrieval with 10 mM Tris/EDTA buffer pH 9.0 before commencing with IHC staining protocol.



Immunofluorescence analysis of human liver cancer using Arginase 1 (ARG1) Rabbit mAb (A22410) at dilution of 1:100 (40x lens).
Blue: DAPI for nuclear staining.