

Folate Binding Protein(FBP) / FOLR1 Rabbit mAb

Catalog No.: A22419 **Recombinant**

Basic Information

Observed MW

38kDa

Calculated MW

30kDa

Category

Primary antibody

Applications

WB,IHC-P,IF/ICC,ELISA

Cross-Reactivity

Human, Mouse, Rat

CloneNo number

ARC50863

Background

The protein encoded by this gene is a member of the folate receptor family. Members of this gene family bind folic acid and its reduced derivatives, and transport 5-methyltetrahydrofolate into cells. This gene product is a secreted protein that either anchors to membranes via a glycosyl-phosphatidylinositol linkage or exists in a soluble form. Mutations in this gene have been associated with neurodegeneration due to cerebral folate transport deficiency. Due to the presence of two promoters, multiple transcription start sites, and alternative splicing, multiple transcript variants encoding the same protein have been found for this gene.

Recommended Dilutions

WB	1:1000 - 1:6000
IHC-P	1:50 - 1:200
IF/ICC	1:100 - 1:800
ELISA	Recommended starting concentration is 1 µg/mL. Please optimize the concentration based on your specific assay requirements.

Contact

	400-999-6126
	cn.market@abclonal.com.cn
	www.abclonal.com.cn

Immunogen Information

Gene ID

2348

Swiss Prot

P15328

Immunogen

A synthetic peptide corresponding to a sequence within amino acids 1-100 of human Folate Binding Protein(FBP) / FOLR1 (NP_000793.1).

Synonyms

FBP; FOLR; NCFTD; FRalpha; Folate Binding Protein(FBP) / FOLR1

Product Information

Source

Rabbit

Isotype

IgG

Purification

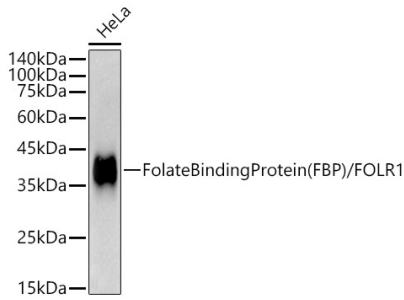
Affinity purification

Storage

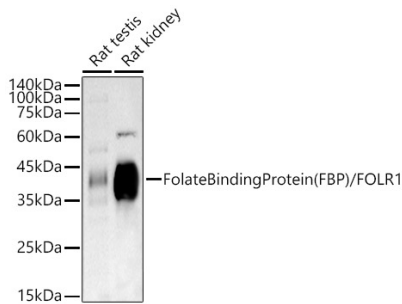
Store at -20°C. Avoid freeze / thaw cycles.

Buffer: PBS with 0.05% proclin300,0.05% BSA,50% glycerol,pH7.3.

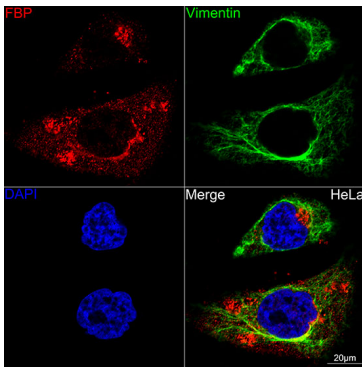
Validation Data



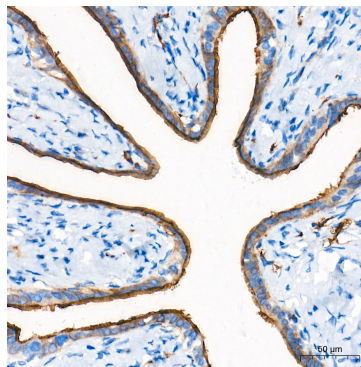
Western blot analysis of lysates from HeLa cells, using Folate Binding Protein(FBP) / FOLR1 Rabbit mAb (A22419) at 1:1000 dilution.
 Secondary antibody: HRP-conjugated Goat anti-Rabbit IgG (H+L) (AS014) at 1:10000 dilution.
 Lysates/proteins: 25µg per lane.
 Blocking buffer: 3% nonfat dry milk in TBST.
 Detection: ECL Basic Kit (RM00020).
 Exposure time: 10s.



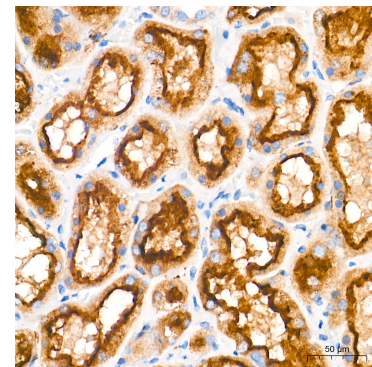
Western blot analysis of various lysates, using Folate Binding Protein(FBP) / FOLR1 Rabbit mAb (A22419) at 1:1000 dilution.
 Secondary antibody: HRP-conjugated Goat anti-Rabbit IgG (H+L) (AS014) at 1:10000 dilution.
 Lysates/proteins: 25µg per lane.
 Blocking buffer: 3% nonfat dry milk in TBST.
 Detection: ECL Basic Kit (RM00020).
 Exposure time: 180s.



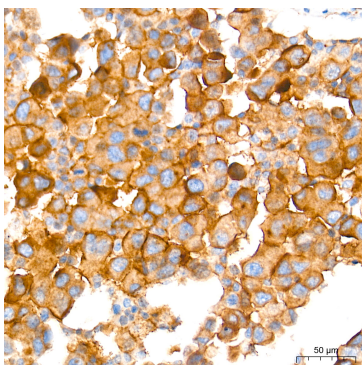
Confocal imaging of HeLa cells using Folate Binding Protein(FBP)/FOLR1 Rabbit mAb (A22419, dilution 1:100) (Red). The cells were counterstained with Vimentin Rabbit mAb (A19607, dilution 1:100) (Green). DAPI was used for nuclear staining (blue). Objective: 60x.



Immunohistochemistry analysis of paraffin-embedded Human fallopian tube tissue using Folate Binding Protein(FBP) / FOLR1 Rabbit mAb (A22419) at a dilution of 1:1000 (40x lens). High pressure antigen retrieval performed with 0.01M Tris-EDTA Buffer (pH 9.0) prior to IHC staining.



Immunohistochemistry analysis of paraffin-embedded Human kidney tissue using Folate Binding Protein(FBP) / FOLR1 Rabbit mAb (A22419) at a dilution of 1:1000 (40x lens). High pressure antigen retrieval performed with 0.01M Tris-EDTA Buffer (pH 9.0) prior to IHC staining.



Immunohistochemistry analysis of paraffin-

Validation Data

embedded Human lung squamous carcinoma tissue using Folate Binding Protein(FBP) / FOLR1 Rabbit mAb (A22419) at a dilution of 1:1000 (40x lens). High pressure antigen retrieval performed with 0.01M Tris-EDTA Buffer (pH 9.0) prior to IHC staining.