

[KO Validated] STAT3 Rabbit mAb

Catalog No.: A22424 **KO** **Validated** **Recombinant**

Basic Information

Observed MW

79kDa,86kDa

Calculated MW

88kDa

Category

Primary antibody

Applications

ELISA,WB,IP

Cross-Reactivity

Human, Mouse, Rat

CloneNo number

ARC0045

Background

The protein encoded by this gene is a member of the STAT protein family. In response to cytokines and growth factors, STAT family members are phosphorylated by the receptor associated kinases, and then form homo- or heterodimers that translocate to the cell nucleus where they act as transcription activators. This protein is activated through phosphorylation in response to various cytokines and growth factors including IFNs, EGF, IL5, IL6, HGF, LIF and BMP2. This protein mediates the expression of a variety of genes in response to cell stimuli, and thus plays a key role in many cellular processes such as cell growth and apoptosis. The small GTPase Rac1 has been shown to bind and regulate the activity of this protein. PIAS3 protein is a specific inhibitor of this protein. This gene also plays a role in regulating host response to viral and bacterial infections. Mutations in this gene are associated with infantile-onset multisystem autoimmune disease and hyper-immunoglobulin E syndrome.

Recommended Dilutions

WB 1:500 - 1:2000**IP** 0.5µg-4µg antibody for
200µg-400µg extracts of
whole cells

Immunogen Information

Gene ID

6774

Swiss Prot

P40763

Immunogen

A synthetic peptide corresponding to a sequence within amino acids 1-100 of human STAT3 (P40763).

Synonyms

APRF; HIES; ADMIO; ADMIO1; [KO/KD Validated] STAT3

Contact

 | 400-999-6126 | cn.market@abclonal.com.cn | www.abclonal.com.cn

Product Information

Source

Rabbit

Isotype

IgG

Purification

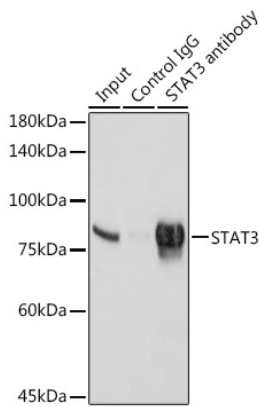
Affinity purification

Storage

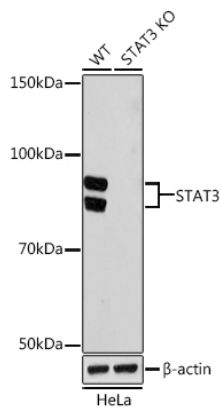
Store at -20°C. Avoid freeze / thaw cycles.

Buffer: PBS with 0.02% sodium azide,0.05% BSA,50% glycerol,pH7.3.

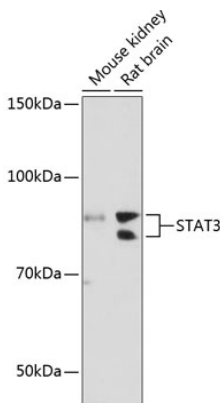
Validation Data



Immunoprecipitation analysis of 300 µg extracts of HeLa cells using 3 µg STAT3 antibody (A22424). Western blot was performed from the immunoprecipitate using STAT3 antibody (A22424) at a dilution of 1:1000.

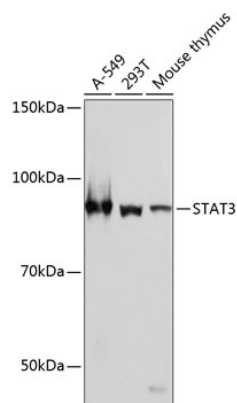


Western blot analysis of lysates from wild type (WT) and STAT3 knockout (KO) HeLa cells, using [KO Validated] STAT3 Rabbit mAb (A22424) at 1:1000 dilution. Secondary antibody: HRP Goat Anti-Rabbit IgG (H+L) (AS014) at 1:10000 dilution. Lysates/proteins: 25µg per lane. Blocking buffer: 3% nonfat dry milk in TBST. Detection: ECL Basic Kit (RM00020). Exposure time: 1min.



Western blot analysis of various lysates using [KO Validated] STAT3 Rabbit mAb (A22424) at 1:1000 dilution. Secondary antibody: HRP Goat Anti-Rabbit IgG (H+L) (AS014) at 1:10000 dilution. Lysates/proteins: 25µg per lane. Blocking buffer: 3% nonfat dry milk in TBST. Detection: ECL Basic Kit (RM00020). Exposure time: 3min.

Validation Data



Western blot analysis of various lysates using [KO Validated] STAT3 Rabbit mAb (A22424) at 1:1000 dilution.

Secondary antibody: HRP Goat Anti-Rabbit IgG (H+L) (AS014) at 1:10000 dilution.

Lysates/proteins: 25µg per lane.

Blocking buffer: 3% nonfat dry milk in TBST.

Detection: ECL Basic Kit (RM00020).

Exposure time: 1min.