

PIM2 Rabbit mAb

Catalog No.: A22432 **Recombinant**

Basic Information

Observed MW

Refer to figures

Calculated MW

34kDa

Category

Primary antibody

Applications

WB,IP,ELISA

Cross-Reactivity

Human

CloneNo number

ARC1485

Background

This gene encodes a protooncogene that acts as a serine/threonine protein kinase. Studies determined the encoded protein functions to prevent apoptosis and to promote cell survival.

Recommended Dilutions

WB 1:500 - 1:2000

IP 0.5µg-4µg antibody for
200µg-400µg extracts of
whole cells

ELISA Recommended starting
concentration is 1 µg/mL.
Please optimize the
concentration based on
your specific assay
requirements.

Immunogen Information

Gene ID

11040

Swiss Prot

Q9P1W9

Immunogen

Synthetic peptide. This information is considered to be commercially sensitive.

Synonyms

PIM2; serine/threonine-protein kinase pim-2

Contact

☎ | 400-999-6126

✉ | cn.market@abclonal.com.cn

🌐 | www.abclonal.com.cn

Product Information

Source

Rabbit

Isotype

IgG

Purification

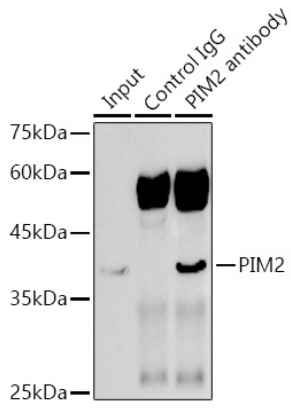
Affinity purification

Storage

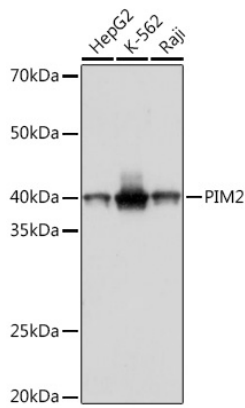
Store at -20°C. Avoid freeze / thaw cycles.

Buffer: PBS containing 50% glycerol and 0.05% BSA, preserved with proclin300 or sodium azide (as specified on the Certificate of Analysis), pH 7.3.

Validation Data



Immunoprecipitation analysis of 300 μ g extracts of K-562 cells using 3 μ g PIM2 antibody (A22432). Western blot was performed from the immunoprecipitate using PIM2 (A22432) at a dilution of 1:1000.



Western blot analysis of various lysates using PIM2 Rabbit mAb (A22432) at 1:1000 dilution. Secondary antibody: HRP-conjugated Goat anti-Rabbit IgG (H+L) (AS014) at 1:10000 dilution. Lysates/proteins: 25 μ g per lane. Blocking buffer: 3% nonfat dry milk in TBST. Detection: ECL Basic Kit (RM00020). Exposure time: 1s.