

Cyclin B1 Rabbit mAb

Catalog No.: A22435 **Recombinant** **2 Publications**

Basic Information

Observed MW

55kDa

Calculated MW

48kDa

Category

Primary antibody

Applications

WB,IHC-P,IP,ELISA

Cross-Reactivity

Human

CloneNo number

ARC2614

Background

The protein encoded by this gene is a regulatory protein involved in mitosis. The gene product complexes with p34(cdc2) to form the maturation-promoting factor (MPF). The encoded protein is necessary for proper control of the G2/M transition phase of the cell cycle.

Recommended Dilutions

WB 1:1000 - 1:4000

IHC-P 1:200 - 1:800

IP 0.5µg-4µg antibody for
200µg-400µg extracts of
whole cells

ELISA Recommended starting
concentration is 1 µg/mL.
Please optimize the
concentration based on
your specific assay
requirements.

Immunogen Information

Gene ID

891

Swiss Prot

P14635

Immunogen

A synthetic peptide corresponding to a sequence within amino acids 334-433 of human Cyclin B1 (P14635).

Synonyms

CCNB; Cyclin B1

Contact

☎ | 400-999-6126

✉ | cn.market@abclonal.com.cn

🌐 | www.abclonal.com.cn

Product Information

Source

Rabbit

Isotype

IgG

Purification

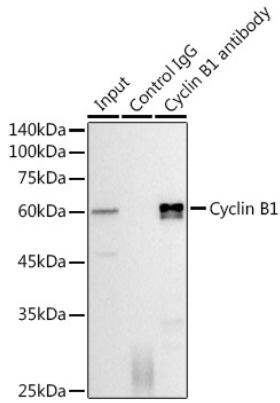
Affinity purification

Storage

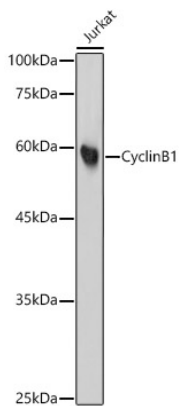
Store at -20°C. Avoid freeze / thaw cycles.

Buffer: PBS with 0.02% sodium azide,0.05% BSA,50% glycerol,pH7.3.

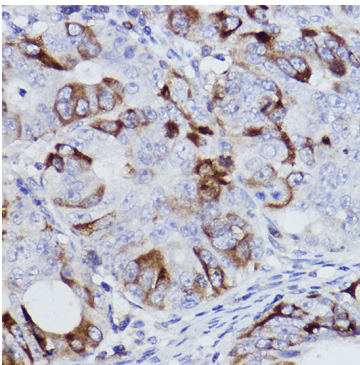
Validation Data



Immunoprecipitation analysis of 300 µg extracts of HeLa cells using 3 µg Cyclin B1 antibody (A22435). Western blot was performed from the immunoprecipitate using Cyclin B1 antibody (A22435) at a dilution of 1:1000.



Western blot analysis of lysates from Jurkat cells, using Cyclin B1 Rabbit mAb (A22435) at 1:1000 dilution. Secondary antibody: HRP-conjugated Goat anti-Rabbit IgG (H+L) (AS014) at 1:10000 dilution. Lysates/proteins: 25µg per lane. Blocking buffer: 3% nonfat dry milk in TBST. Detection: ECL Basic Kit (RM00020). Exposure time: 30s.



Immunohistochemistry analysis of paraffin-embedded Human colon carcinoma using Cyclin B1 Rabbit mAb (A22435) at dilution of 1:100 (40x lens). High pressure antigen retrieval performed with 0.01M Citrate Bufferr (pH 6.0) prior to IHC staining.