

MEK1 Rabbit mAb

Catalog No.: A22436 **Recombinant**

Basic Information

Observed MW

46kDa

Calculated MW

43kDa

Category

Primary antibody

Applications

ELISA, WB, IHC-P, IP

Cross-Reactivity

Human, Mouse, Rat

CloneNo number

ARC2616

Background

The protein encoded by this gene is a member of the dual specificity protein kinase family, which acts as a mitogen-activated protein (MAP) kinase kinase. MAP kinases, also known as extracellular signal-regulated kinases (ERKs), act as an integration point for multiple biochemical signals. This protein kinase lies upstream of MAP kinases and stimulates the enzymatic activity of MAP kinases upon wide variety of extra- and intracellular signals. As an essential component of MAP kinase signal transduction pathway, this kinase is involved in many cellular processes such as proliferation, differentiation, transcription regulation and development.

Recommended Dilutions

WB 1:500 - 1:1000**IHC-P** 1:50 - 1:200**IP** 0.5µg-4µg antibody for
400µg-600µg extracts of
whole cells

Immunogen Information

Gene ID

5604

Swiss Prot

Q02750

Immunogen

A synthetic peptide corresponding to a sequence within amino acids 150-250 of human MEK1 (Q02750).

Synonyms

MEL; CFC3; MEK1; MKK1; MAPKK1; PRKMK1

Contact

 | 400-999-6126 | cn.market@abclonal.com.cn | www.abclonal.com.cn

Product Information

Source

Rabbit

Isotype

IgG

Purification

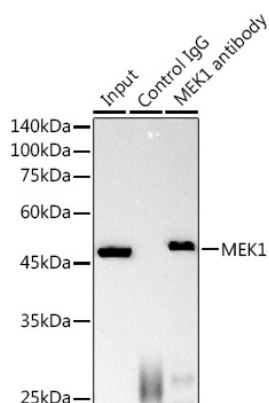
Affinity purification

Storage

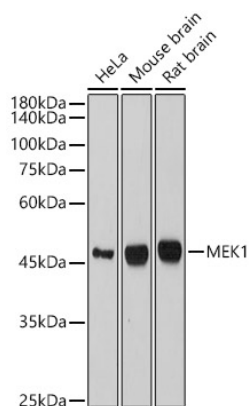
Store at -20°C. Avoid freeze / thaw cycles.

Buffer: PBS with 0.02% sodium azide, 0.05% BSA, 50% glycerol, pH7.3.

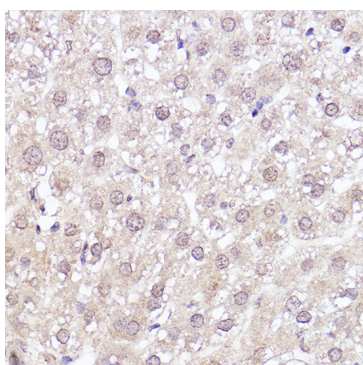
Validation Data



Immunoprecipitation analysis of 600 µg extracts of Mouse brain using 3 µg MEK1 antibody (A22436). Western blot was performed from the immunoprecipitate using MEK1 antibody (A22436) at a dilution of 1:1000.



Western blot analysis of various lysates, using MEK1 Rabbit mAb (A22436) at 1:1000 dilution. Secondary antibody: HRP Goat Anti-Rabbit IgG (H+L) (AS014) at 1:10000 dilution. Lysates/proteins: 25µg per lane. Blocking buffer: 3% nonfat dry milk in TBST. Detection: ECL Basic Kit (RM00020). Exposure time: 180s.



Immunohistochemistry analysis of MEK1 in paraffin-embedded rat liver using MEK1 Rabbit mAb (A22436) at dilution of 1:100 (40x lens). Perform high pressure antigen retrieval with 10 mM citrate buffer pH 6.0 before commencing with IHC staining protocol.