

Pan-Symmetric Di-Methyl Arginine Motif Rabbit mAb

Catalog No.: A22445

Recombinant

Basic Information

Observed MW

Calculated MW

Category

Primary antibody

Applications

WB,IP,ELISA

Cross-Reactivity

Human, Mouse, Rat, Other (Wide Range Predicted)

CloneNo number

ARC51200

Background

Recommended Dilutions

WB 1:500 - 1:1000

IP 0.5µg-4µg antibody for
200µg-400µg extracts of
whole cells

ELISA Recommended starting
concentration is 1 µg/mL.
Please optimize the
concentration based on
your specific assay
requirements.

Immunogen Information

Gene ID

Swiss Prot

Immunogen

Synthetic peptide. This information is considered to be commercially sensitive.

Synonyms

Contact

☎ | 400-999-6126

✉ | cn.market@abclonal.com.cn

🌐 | www.abclonal.com.cn

Product Information

Source

Rabbit

Isotype

IgG

Purification

Affinity purification

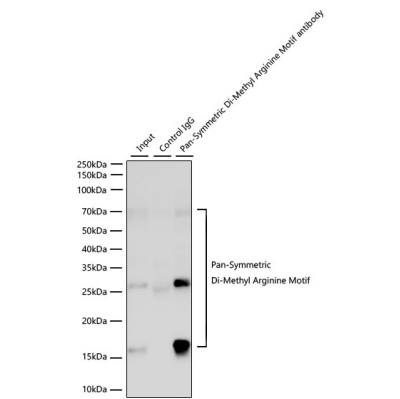
Storage

Store at -20°C. Avoid freeze / thaw cycles.

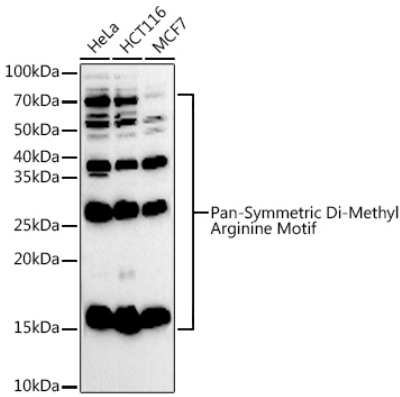
Buffer: PBS with 0.05% proclin300,0.05% BSA,50% glycerol,pH7.3.

Validation Data

Immunoprecipitation of Pan-Symmetric Di-Methyl Arginine Motif from 300 µg extracts of HeLa cells was performed using 2 µg of Pan-Symmetric Di-Methyl Arginine Motif Rabbit mAb (A22445). Rabbit Control IgG (AC005) was used to precipitate the Control IgG sample. IP samples were eluted with 1x reducing Laemmli Buffer. The Input lane represents 10% of the total input. Western blot analysis of immunoprecipitates was conducted using Pan-Symmetric Di-Methyl Arginine Motif Rabbit mAb (A22445) at a dilution of 1:1000.



Western blot analysis of various lysates using Pan-Symmetric Di-Methyl Arginine Motif Rabbit mAb (A22445) at 1:1000 dilution.
Secondary antibody: HRP-conjugated Goat anti-Rabbit IgG (H+L) (AS014) at 1:10000 dilution.
Lysates/proteins: 25µg per lane.
Blocking buffer: 3% nonfat dry milk in TBST.
Detection: ECL Basic Kit (RM00020).
Exposure time: 90s.



Western blot analysis of various lysates using Pan-Symmetric Di-Methyl Arginine Motif Rabbit mAb (A22445) at 1:1000 dilution.
Secondary antibody: HRP-conjugated Goat anti-Rabbit IgG (H+L) (AS014) at 1:10000 dilution.
Lysates/proteins: 25µg per lane.
Blocking buffer: 3% nonfat dry milk in TBST.
Detection: ECL Enhanced Kit (RM00021).
Exposure time: 90s.

