

AHR Rabbit PolymAb®

Catalog No.: A22464PM

Basic Information

Observed MW

105kDa

Calculated MW

96kDa

Category

Primary antibody

Applications

WB, IHC-P, IF/ICC, ELISA

Cross-Reactivity

Human, Mouse

Background

The protein encoded by this gene is a ligand-activated helix-loop-helix transcription factor involved in the regulation of biological responses to planar aromatic hydrocarbons. This receptor has been shown to regulate xenobiotic-metabolizing enzymes such as cytochrome P450. Before ligand binding, the encoded protein is sequestered in the cytoplasm; upon ligand binding, this protein moves to the nucleus and stimulates transcription of target genes.

Recommended Dilutions

WB 1:2000 - 1:10000

IHC-P 1:100 - 1:500

IF/ICC 1:50 - 1:200

ELISA Recommended starting concentration is 1 µg/mL. Please optimize the concentration based on your specific assay requirements.

Immunogen Information

Gene ID

196

Swiss Prot

P35869

Immunogen

Recombinant fusion protein containing a sequence corresponding to amino acids 619-848 of human AHR Rabbit PolymAb® (NP_001612.1).

Synonyms

RP85; bHLHe76

Contact

☎ | 400-999-6126

✉ | cn.market@abclonal.com.cn

🌐 | www.abclonal.com.cn

Product Information

Source

Rabbit

Isotype

IgG

Purification

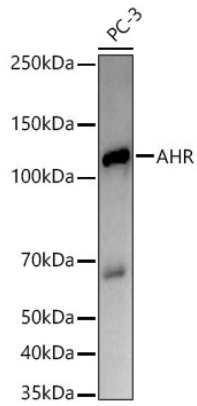
Affinity purification

Storage

Store at -20°C. Avoid freeze / thaw cycles.

Buffer: PBS with 0.05% proclin300, 0.05% BSA, 50% glycerol, pH7.3.

Validation Data



Western blot analysis of lysates from PC-3 cells, using AHR Rabbit PolymAb® (A22464PM) at 1:10000 dilution.

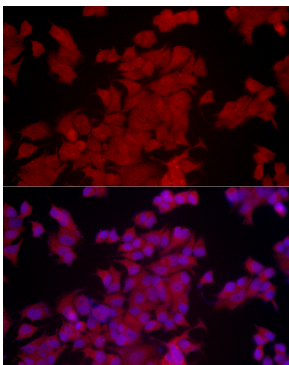
Secondary antibody: HRP-conjugated Goat anti-Rabbit IgG (H+L) (AS014) at 1:10000 dilution.

Lysates/proteins: 25µg per lane.

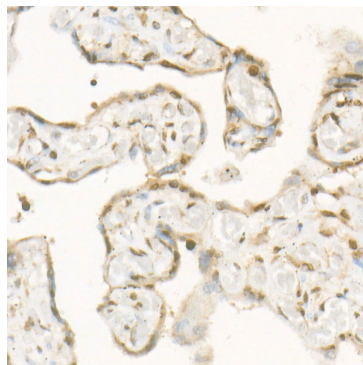
Blocking buffer: 3% nonfat dry milk in TBST.

Detection: ECL Basic Kit (RM00020).

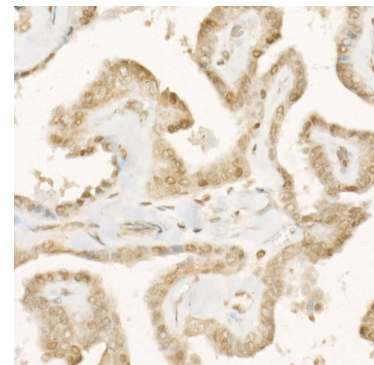
Exposure time: 180s.



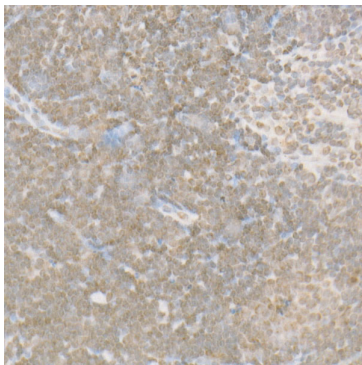
Immunofluorescence analysis of MCF7 cells using AHR Rabbit PolymAb® (A22464PM) at a dilution of 1:100 (40x lens). Secondary antibody: Cy3 Goat anti-Rabbit IgG (H+L) (AS007) at 1:500 dilution. Blue: DAPI for nuclear staining.



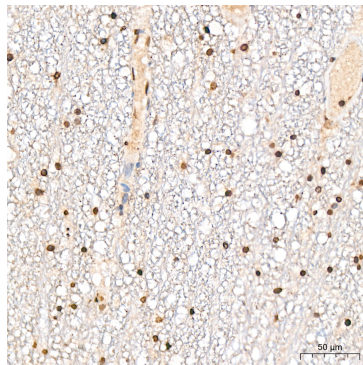
Immunohistochemistry analysis of paraffin-embedded Human placenta tissue using AHR Rabbit PolymAb® (A22464PM) at a dilution of 1:500 (40x lens). High pressure antigen retrieval performed with 0.01M Citrate Buffer (pH 6.0) prior to IHC staining.



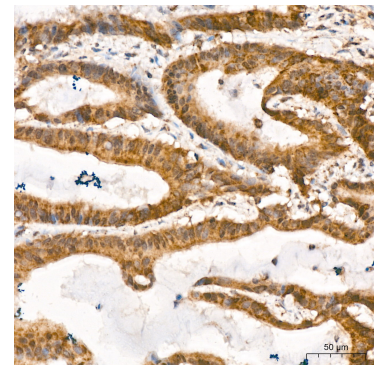
Immunohistochemistry analysis of paraffin-embedded Human thyroid cancer tissue using AHR Rabbit PolymAb® (A22464PM) at a dilution of 1:500 (40x lens). High pressure antigen retrieval performed with 0.01M Citrate Buffer (pH 6.0) prior to IHC staining.



Immunohistochemistry analysis of paraffin-embedded Mouse spleen tissue using AHR Rabbit PolymAb® (A22464PM) at a dilution of 1:500 (40x lens). High pressure antigen retrieval performed with 0.01M Citrate Buffer (pH 6.0) prior to IHC staining.

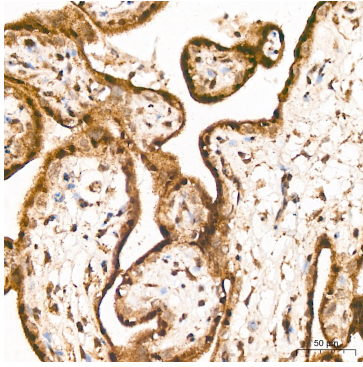


Immunohistochemistry analysis of paraffin-embedded Human brain tissue using AHR Rabbit PolymAb® (A22464PM) at a dilution of 1:200 (40x lens). High pressure antigen retrieval performed with 0.01M Citrate Buffer (pH 6.0) prior to IHC staining.

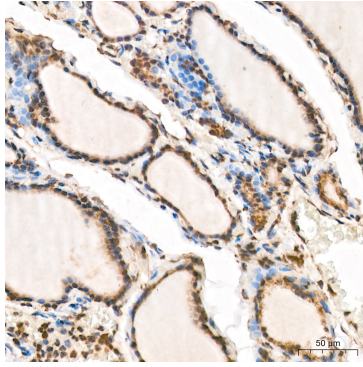


Immunohistochemistry analysis of paraffin-embedded Human colon carcinoma tissue using AHR Rabbit PolymAb® (A22464PM) at a dilution of 1:200 (40x lens). High pressure antigen retrieval performed with 0.01M Citrate Buffer (pH 6.0) prior to IHC staining.

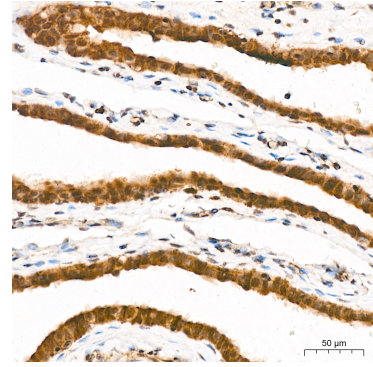
Validation Data



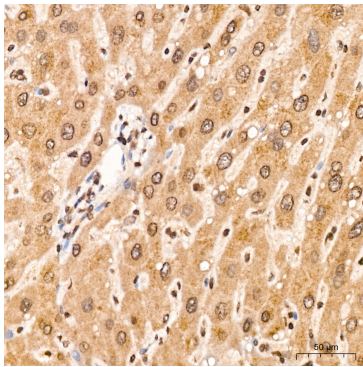
Immunohistochemistry analysis of paraffin-embedded Human placenta tissue using AHR Rabbit PolymAb® (A22464PM) at a dilution of 1:200 (40x lens). High pressure antigen retrieval performed with 0.01M Citrate Buffer (pH 6.0) prior to IHC staining.



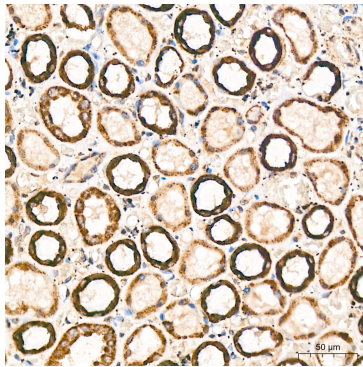
Immunohistochemistry analysis of paraffin-embedded Human thyroid tissue using AHR Rabbit PolymAb® (A22464PM) at a dilution of 1:200 (40x lens). High pressure antigen retrieval performed with 0.01M Citrate Buffer (pH 6.0) prior to IHC staining.



Immunohistochemistry analysis of paraffin-embedded Human fallopian tube tissue using AHR Rabbit PolymAb® (A22464PM) at a dilution of 1:200 (40x lens). High pressure antigen retrieval performed with 0.01M Citrate Buffer (pH 6.0) prior to IHC staining.



Immunohistochemistry analysis of paraffin-embedded Human liver tissue using AHR Rabbit PolymAb® (A22464PM) at a dilution of 1:200 (40x lens). High pressure antigen retrieval performed with 0.01M Citrate Buffer (pH 6.0) prior to IHC staining.



Immunohistochemistry analysis of paraffin-embedded Human kidney tissue using AHR Rabbit PolymAb® (A22464PM) at a dilution of 1:200 (40x lens). High pressure antigen retrieval performed with 0.01M Citrate Buffer (pH 6.0) prior to IHC staining.