

ATP6AP1 Rabbit mAb

Catalog No.: A22468 **Recombinant**

Basic Information

Observed MW

65kDa

Calculated MW

52kDa

Category

Primary antibody

Applications

ELISA, WB, IHC-P

Cross-Reactivity

Human, Mouse

CloneNo number

ARC57179

Background

This gene encodes a component of a multisubunit enzyme that mediates acidification of eukaryotic intracellular organelles. Vacuolar ATPase (V-ATPase) is comprised of a cytosolic V1 (site of the ATP catalytic site) and a transmembrane V0 domain. V-ATPase dependent organelle acidification is necessary for such intracellular processes as protein sorting, zymogen activation, and receptor-mediated endocytosis. The encoded protein of this gene may assist in the V-ATPase-mediated acidification of neuroendocrine secretory granules. This protein may also play a role in early development.

Recommended Dilutions

WB 1:1000 - 1:5000

IHC-P 1:100 - 1:500

Immunogen Information

Gene ID

537

Swiss Prot

Q15904

Immunogen

A synthetic peptide corresponding to a sequence within amino acids 1-100 of human ATP6AP1 (NP_001174.2).

Synonyms

16A; CF2; Ac45; XAP3; XAP-3; ATP6S1; VATPS1; ATP6IP1; ATP6AP1

Contact

☎ | 400-999-6126

✉ | cn.market@abclonal.com.cn

🌐 | www.abclonal.com.cn

Product Information

Source

Rabbit

Isotype

IgG

Purification

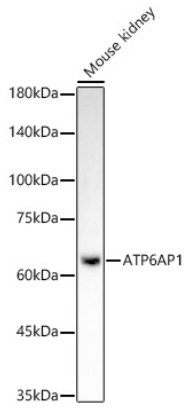
Affinity purification

Storage

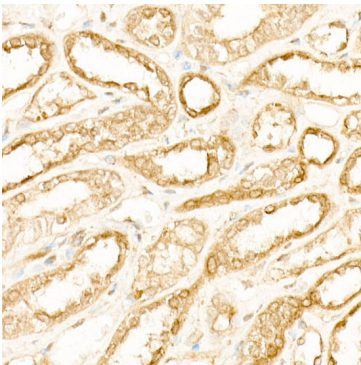
Store at -20°C. Avoid freeze / thaw cycles.

Buffer: PBS with 0.05% proclin300, 0.05% BSA, 50% glycerol, pH7.3.

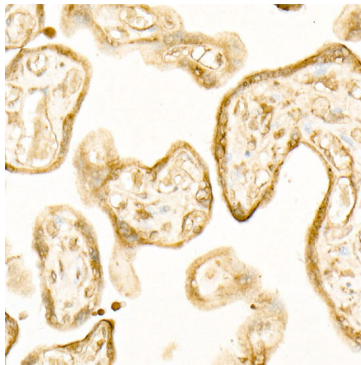
Validation Data



Western blot analysis of lysates from mouse kidney, using ATP6AP1 Rabbit mAb (A22468) at 1:2000 dilution. Secondary antibody: HRP Goat Anti-Rabbit IgG (H+L) (AS014) at 1:10000 dilution. Lysates/proteins: 25µg per lane. Blocking buffer: 3% nonfat dry milk in TBST. Detection: ECL Basic Kit (RM00020). Exposure time: 180s.



Immunohistochemistry analysis of paraffin-embedded human kidney using ATP6AP1 Rabbit mAb (A22468) at dilution of 1:300 (40x lens). Perform high pressure antigen retrieval with 10 mM citrate buffer pH 6.0 before commencing with IHC staining protocol.



Immunohistochemistry analysis of paraffin-embedded human placenta using ATP6AP1 Rabbit mAb (A22468) at dilution of 1:300 (40x lens). Perform high pressure antigen retrieval with 10 mM citrate buffer pH 6.0 before commencing with IHC staining protocol.