

[KD Validated] RHOT1/MIRO1 Rabbit mAb

Catalog No.: A22469 **Recombinant**

Basic Information

Observed MW

75kDa

Calculated MW

71kDa

Category

Primary antibody

Applications

WB, ELISA

Cross-Reactivity

Human, Mouse, Rat

CloneNo number

ARC57606

Background

Predicted to enable GTP binding activity and GTPase activity. Involved in cellular homeostasis; mitochondrial outer membrane permeabilization; and mitochondrion transport along microtubule. Is integral component of mitochondrial outer membrane.

Recommended Dilutions

WB 1:500 - 1:2000

ELISA Recommended starting concentration is 1 µg/mL. Please optimize the concentration based on your specific assay requirements.

Immunogen Information

Gene ID

55288

Swiss Prot

Q8IXI2

Immunogen

Recombinant protein (or fragment). This information is considered to be commercially sensitive.

Synonyms

ARHT1; MIRO1; MIRO-1; [KO/KD Validated] RHOT1/MIRO1

Contact

 | 400-999-6126

 | cn.market@abclonal.com.cn

 | www.abclonal.com.cn

Product Information

Source

Rabbit

Isotype

IgG

Purification

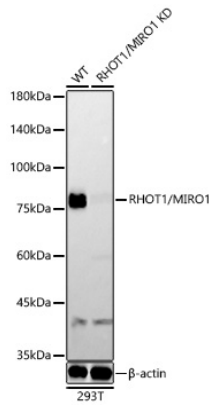
Affinity purification

Storage

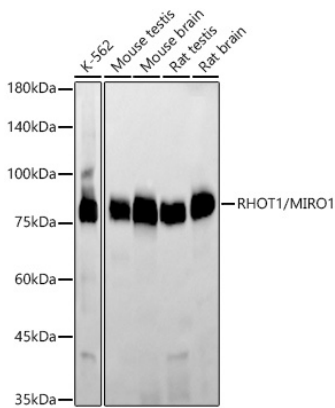
Store at -20°C. Avoid freeze / thaw cycles.

Buffer: PBS containing 50% glycerol and 0.05% BSA, preserved with proclin300 or sodium azide (as specified on the Certificate of Analysis), pH 7.3.

Validation Data



Western blot analysis of lysates from wild type (WT) and RHOT1/MIRO1 knockdown (KD) 293T cells, using [KD Validated] RHOT1/MIRO1 Rabbit mAb (A22469) at 1:2000 dilution.
Secondary antibody: HRP-conjugated Goat anti-Rabbit IgG (H+L) (AS014) at 1:10000 dilution.
Lysates/proteins: 25µg per lane.
Blocking buffer: 3% nonfat dry milk in TBST.
Detection: ECL Basic Kit (RM00021).
Exposure time: 60s.



Western blot analysis of various lysates, using [KD Validated] RHOT1/MIRO1 Rabbit mAb (A22469) at 1:2000 dilution.
Secondary antibody: HRP-conjugated Goat anti-Rabbit IgG (H+L) (AS014) at 1:10000 dilution.
Lysates/proteins: 25µg per lane.
Blocking buffer: 3% nonfat dry milk in TBST.
Detection: ECL Basic Kit (RM00021).
Exposure time: 60s.