

TGF beta Receptor II Rabbit mAb

Catalog No.: A22471 **Recombinant**

Basic Information

Observed MW

65kDa,85kDa

Calculated MW

65kDa

Category

Primary antibody

Applications

ELISA,IHC-P

Cross-Reactivity

Human, Mouse

CloneNo number

ARC57218

Background

The protein encoded by this gene is a transmembrane protein that has a protein kinase domain, forms a heterodimeric complex with TGF-beta receptor type-1, and binds TGF-beta. This receptor/ligand complex phosphorylates proteins, which then enter the nucleus and regulate the transcription of genes related to cell proliferation, cell cycle arrest, wound healing, immunosuppression, and tumorigenesis. Mutations in this gene have been associated with Marfan Syndrome, Loeys-Deitz Aortic Aneurysm Syndrome, and the development of various types of tumors. Alternatively spliced transcript variants encoding different isoforms have been characterized.

Recommended Dilutions

IHC-P 1:50 - 1:200

Immunogen Information

Gene ID

7048

Swiss Prot

P37173

Immunogen

A synthetic peptide corresponding to a sequence within amino acids 200-300 of human TGF beta Receptor II (TGFB2) (NP_003233.4).

Synonyms

AAT3; FAA3; LDS2; MFS2; RIIC; LDS1B; LDS2B; TAAD2; TBR1; TBR-ii; TGFR-2; tbetaR-II; TGFbeta-R11; TGF beta Receptor II (TGFB2)

Contact

☎ | 400-999-6126

✉ | cn.market@abclonal.com.cn

🌐 | www.abclonal.com.cn

Product Information

Source

Rabbit

Isotype

IgG

Purification

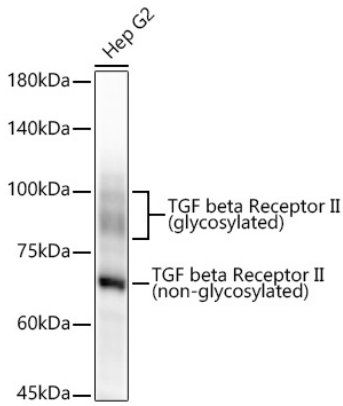
Affinity purification

Storage

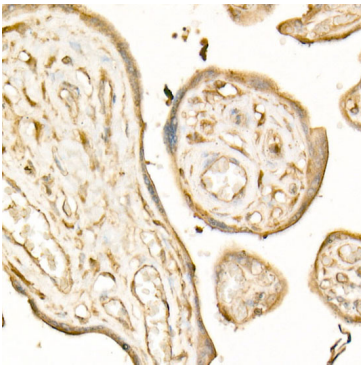
Store at -20°C. Avoid freeze / thaw cycles.

Buffer: PBS with 0.05% proclin300,0.05% BSA,50% glycerol,pH7.3.

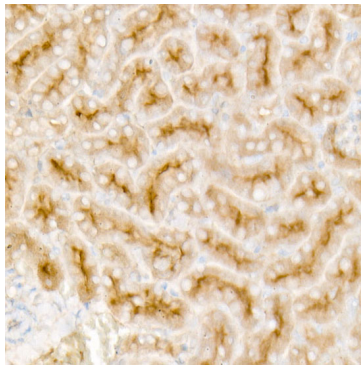
Validation Data



Western blot analysis of lysates from Hep G2 cells using TGF beta Receptor II Rabbit mAb (A22471) at 1:8000 dilution incubated overnight at 4°C.
Secondary antibody: HRP-conjugated Goat anti-Rabbit IgG (H+L) (AS014) at 1:10000 dilution.
Lysates/proteins: 25 µg per lane.
Blocking buffer: 3% nonfat dry milk in TBST.
Detection: ECL Basic Kit (RM00020).
Exposure time: 30s.



Immunohistochemistry analysis of paraffin-embedded Human placenta using TGF beta Receptor II (TGFB2) Rabbit mAb (A22471) at dilution of 1:200 (40x lens). High pressure antigen retrieval performed with 0.01M Citrate Bufferr (pH 6.0) prior to IHC staining.



Immunohistochemistry analysis of paraffin-embedded Mouse kidney using TGF beta Receptor II (TGFB2) Rabbit mAb (A22471) at dilution of 1:200 (40x lens). High pressure antigen retrieval performed with 0.01M Citrate Bufferr (pH 6.0) prior to IHC staining.