

# CD3H Rabbit mAb

Catalog No.: A22473 **Recombinant**

## Basic Information

**Observed MW**

18kDa

**Calculated MW**

19kDa

**Category**

Primary antibody

**Applications**

ELISA, WB, IHC-P

**Cross-Reactivity**

Human, Mouse, Rat

**CloneNo number**

ARC57083

## Background

The protein encoded by this gene is T-cell receptor zeta, which together with T-cell receptor alpha/beta and gamma/delta heterodimers, and with CD3-gamma, -delta and -epsilon, forms the T-cell receptor-CD3 complex. The zeta chain plays an important role in coupling antigen recognition to several intracellular signal-transduction pathways. Low expression of the antigen results in impaired immune response. Two alternatively spliced transcript variants encoding distinct isoforms have been found for this gene.

## Recommended Dilutions

**WB** 1:1000 - 1:5000**IHC-P** 1:2000 - 1:6000

## Immunogen Information

**Gene ID**

919

**Swiss Prot**

P20963

**Immunogen**

Recombinant fusion protein containing a sequence corresponding to amino acids 50-164 of human CD3H (NP\_932170.1).

**Synonyms**

T3Z; CD3H; CD3Q; CD3Z; TCRZ; IMD25; CD3ZETA; CD3-ZETA

## Contact

 | 400-999-6126 | [cn.market@abclonal.com.cn](mailto:cn.market@abclonal.com.cn) | [www.abclonal.com.cn](http://www.abclonal.com.cn)

## Product Information

**Source**

Rabbit

**Isotype**

IgG

**Purification**

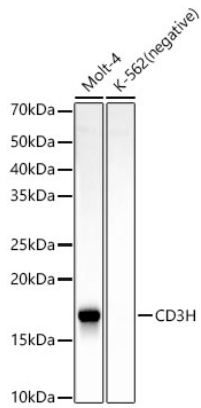
Affinity purification

**Storage**

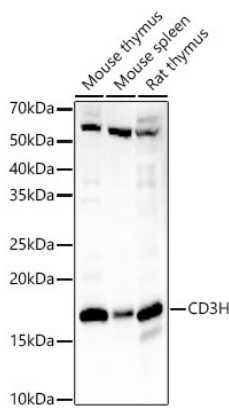
Store at -20°C. Avoid freeze / thaw cycles.

Buffer: PBS with 0.05% proclin300, 0.05% BSA, 50% glycerol, pH7.3.

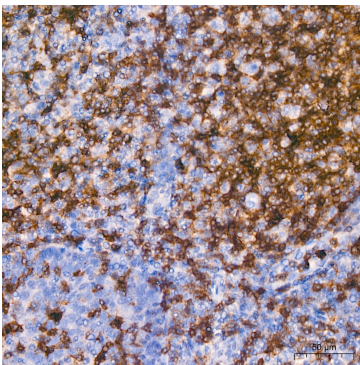
## Validation Data



Western blot analysis of various lysates, using CD3H Rabbit mAb (A22473) at 1:2000 dilution. Secondary antibody: HRP Goat Anti-Rabbit IgG (H+L) (AS014) at 1:10000 dilution. Lysates/proteins: 25µg per lane. Blocking buffer: 3% nonfat dry milk in TBST. Detection: ECL Basic Kit (RM00020). Exposure time: 90s.



Western blot analysis of various lysates, using CD3H Rabbit mAb (A22473) at 1:2000 dilution. Secondary antibody: HRP Goat Anti-Rabbit IgG (H+L) (AS014) at 1:10000 dilution. Lysates/proteins: 25µg per lane. Blocking buffer: 3% nonfat dry milk in TBST. Detection: ECL Basic Kit (RM00020). Exposure time: 180s.



Immunohistochemistry analysis of paraffin-embedded human tonsil tissue using CD3H Rabbit mAb (A22473) at a dilution of 1:5000 (40x lens). High pressure antigen retrieval was performed with 0.01M Tris-EDTA buffer (pH 9.0) prior to IHC staining.