

Rig-I/DDX58 Rabbit mAb

Catalog No.: A22478 **Recombinant**

Basic Information

Observed MW

107kDa

Calculated MW

107kDa

Category

Primary antibody

Applications

ELISA, WB

Cross-Reactivity

Human, Mouse

CloneNo number

ARC54110

Background

DEAD box proteins, characterized by the conserved motif Asp-Glu-Ala-Asp (DEAD), are putative RNA helicases which are implicated in a number of cellular processes involving RNA binding and alteration of RNA secondary structure. This gene encodes a protein containing RNA helicase-DEAD box protein motifs and a caspase recruitment domain (CARD). It is involved in viral double-stranded (ds) RNA recognition and the regulation of the antiviral innate immune response. Mutations in this gene are associated with Singleton-Merten syndrome 2.

Recommended Dilutions

WB 1:1000 - 1:5000

Immunogen Information

Gene ID

23586

Swiss Prot

O95786

Immunogen

Recombinant fusion protein containing a sequence corresponding to amino acids 241-455 of human Rig-I/DDX58 (NP_055129.2).

Synonyms

RIG1; DDX58; RIG-I; RLR-1; SGMRT2; Rig-I/DDX58

Contact

☎ | 400-999-6126

✉ | cn.market@abclonal.com.cn

🌐 | www.abclonal.com.cn

Product Information

Source

Rabbit

Isotype

IgG

Purification

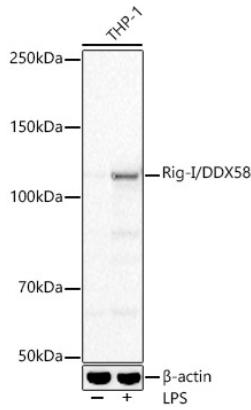
Affinity purification

Storage

Store at -20°C. Avoid freeze / thaw cycles.

Buffer: PBS with 0.05% proclin300, 0.05% BSA, 50% glycerol, pH7.3.

Validation Data



Western blot analysis of various lysates, using Rig-I/DDX58 Rabbit mAb (A22478) at 1:2000 dilution. THP-1 cells were treated by LPS (1 $\mu\text{g}/\text{ml}$) at 37°C for 6 hours.

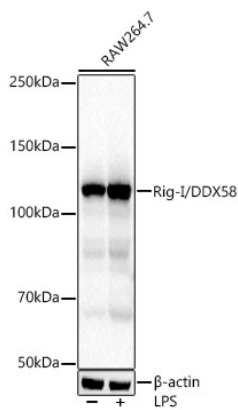
Secondary antibody: HRP Goat Anti-Rabbit IgG (H+L) (AS014) at 1:10000 dilution.

Lysates/proteins: 25 μg per lane.

Blocking buffer: 3% nonfat dry milk in TBST.

Detection: ECL Basic Kit (RM00020).

Exposure time: 3s.



Western blot analysis of lysates from RAW264.7 cells, using Rig-I/DDX58 Rabbit mAb (A22478) at 1:2000 dilution. RAW264.7 cells were treated by LPS (1 $\mu\text{g}/\text{ml}$) at 37°C for 8 hours.

Secondary antibody: HRP Goat Anti-Rabbit IgG (H+L) (AS014) at 1:10000 dilution.

Lysates/proteins: 25 μg per lane.

Blocking buffer: 3% nonfat dry milk in TBST.

Detection: ECL Basic Kit (RM00020).

Exposure time: 3s.