

# Folate Binding Protein(FBP) / FOLR1 Rabbit PolymAb®

Catalog No.: A22481

## Basic Information

### Observed MW

38kDa

### Calculated MW

30kDa

### Category

Primary antibody

### Applications

ELISA, WB

### Cross-Reactivity

Human, Mouse, Rat

### CloneNo number

ARC50859\_ARC50863

## Background

The protein encoded by this gene is a member of the folate receptor family. Members of this gene family bind folic acid and its reduced derivatives, and transport 5-methyltetrahydrofolate into cells. This gene product is a secreted protein that either anchors to membranes via a glycosyl-phosphatidylinositol linkage or exists in a soluble form. Mutations in this gene have been associated with neurodegeneration due to cerebral folate transport deficiency. Due to the presence of two promoters, multiple transcription start sites, and alternative splicing, multiple transcript variants encoding the same protein have been found for this gene.

## Recommended Dilutions

WB 1:500 - 1:1000

## Immunogen Information

### Gene ID

2348

### Swiss Prot

P15328

### Immunogen

A synthetic peptide corresponding to a sequence within amino acids 1-100 of human Folate Binding Protein(FBP) / FOLR1 (NP\_000793.1).

### Synonyms

FBP; FOLR; NCFTD; FRalpha

## Contact

☎ | 400-999-6126

✉ | [cn.market@abclonal.com.cn](mailto:cn.market@abclonal.com.cn)

🌐 | [www.abclonal.com.cn](http://www.abclonal.com.cn)

## Product Information

### Source

Rabbit

### Isotype

IgG

### Purification

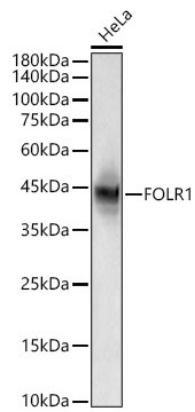
Affinity purification

### Storage

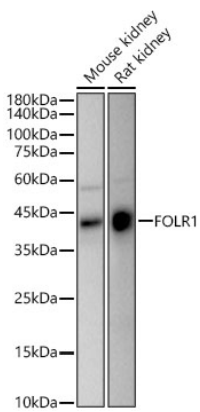
Store at -20°C. Avoid freeze / thaw cycles.

Buffer: PBS with 0.05% proclin300, 0.05% BSA, 50% glycerol, pH7.3.

Validation Data



Western blot analysis of extracts from HeLa cells, using Folate Binding Protein(FBP) / FOLR1 Rabbit PolymAb® (A22481) at 1:1000 dilution.Secondary antibody: HRP Goat Anti-Rabbit IgG (H+L) (AS014) at 1:10000 dilution.Lysates/proteins: 25ug per lane.Blocking buffer: 3% nonfat dry milk in TBST.Detection: ECL Basic Kit (RM00020).Exposure time: 10s.



Western blot analysis of various lysates, using Folate Binding Protein(FBP) / FOLR1 Rabbit PolymAb®(A22481) at 1:1000 dilution.Secondary antibody: HRP Goat Anti-Rabbit IgG (H+L) (AS014) at 1:10000 dilution.Lysates/proteins: 25ug per lane.Blocking buffer: 3% nonfat dry milk in TBST.Detection: ECL Basic Kit (RM00020).Exposure time: 10s.