

ABflo® 488 Rabbit anti-Human CD326/EPCAM mAb

Catalog No.: A22485

Basic Information

Observed MW

Calculated MW

35kDa

Category

Primary antibody

Applications

FC

Cross-Reactivity

Human

CloneNo number

ARC57676-ABf488

Conjugate

ABflo® 488. Ex:491nm. Em:516nm.

Recommended Dilutions

FC 5 µl per 10⁶ cells in
100 µl volume

Background

This gene encodes a carcinoma-associated antigen and is a member of a family that includes at least two type I membrane proteins. This antigen is expressed on most normal epithelial cells and gastrointestinal carcinomas and functions as a homotypic calcium-independent cell adhesion molecule. The antigen is being used as a target for immunotherapy treatment of human carcinomas. Mutations in this gene result in congenital tufting enteropathy.

Immunogen Information

Gene ID

4072

Swiss Prot

P16422

Immunogen

Recombinant fusion protein containing a sequence corresponding to amino acids 24-265 of human CD326/EPCAM (NP_002345.2).

Synonyms

ESA; KSA; M4S1; MK-1; DIAR5; EGP-2; EGP40; KS1/4; MIC18; TROP1; BerEp4; EGP314; HNPCC8; LYNCH8; MOC-31; Ber-Ep4; TACSTD1

Contact

☎ | 400-999-6126

✉ | cn.market@abclonal.com.cn

🌐 | www.abclonal.com.cn

Product Information

Source

Rabbit

Isotype

IgG

Purification

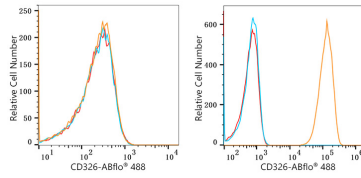
Affinity purification

Storage

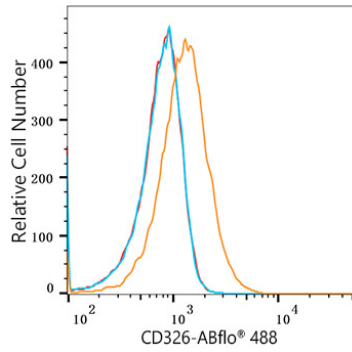
Store at 2-8°C. Avoid freeze.

Buffer: PBS with 0.03% proclin300,0.2% BSA,pH7.3.

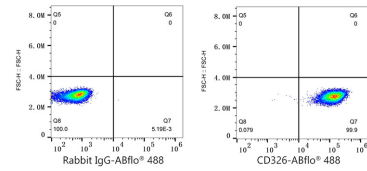
Validation Data



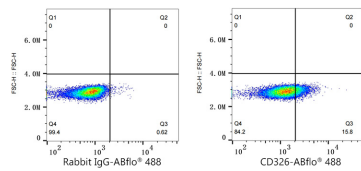
Flow cytometry: 1×10^6 Jurkat cells (negative control, left) and HT-29 cells (right) were surface-stained with ABflo® 488 Rabbit anti-Human CD326/EPCAM mAb (A22485, 2 µg/mL, orange line) or ABflo® 488 Rabbit IgG isotype control (A22069, 2 µg/mL, blue line). Non-fluorescently stained cells was used as blank control (red line).



Flow cytometry: 1×10^6 HeLa cells (Low Expression) were surface-stained with ABflo® 488 Rabbit anti-Human CD326/EPCAM mAb (A22485, 5 µl/Test, orange line) or ABflo® 488 Rabbit IgG isotype control (A22069, 5 µl/Test, blue line). Non-fluorescently stained HeLa cells was used as blank control (red line).



Flow cytometry: 1×10^6 HT-29 cells were surface-stained with ABflo® 488 Rabbit IgG isotype control (A22069, 5 µl/Test, left) or ABflo® 488 Rabbit anti-Human CD326/EPCAM mAb (A22485, 5 µl/Test, right).



Flow cytometry: 1×10^6 HeLa cells (Low Expression) were surface-stained with ABflo® 488 Rabbit IgG isotype control (A22069, 5 µl/Test, left) or ABflo® 488 Rabbit anti-Human CD326/EPCAM mAb (A22485, 5 µl/Test, right).