

ABflo® 647 Rabbit anti-Human CD326/EPCAM mAb

Catalog No.: A22486

Basic Information

Observed MW

Calculated MW

35kDa

Category

Primary antibody

Applications

IF/ICC,FC

Cross-Reactivity

Human

CloneNo number

ARC57676

Conjugate

ABflo® 647. Ex:648nm. Em:664nm.

Background

This gene encodes a carcinoma-associated antigen and is a member of a family that includes at least two type I membrane proteins. This antigen is expressed on most normal epithelial cells and gastrointestinal carcinomas and functions as a homotypic calcium-independent cell adhesion molecule. The antigen is being used as a target for immunotherapy treatment of human carcinomas. Mutations in this gene result in congenital tufting enteropathy.

Recommended Dilutions

IF/ICC 1:50 - 1:200

FC 5 µl per 10⁶ cells in
100 µl volume

Immunogen Information

Gene ID

4072

Swiss Prot

P16422

Immunogen

Recombinant protein (or fragment). This information is considered to be commercially sensitive.

Synonyms

ESA; KSA; M4S1; MK-1; DIAR5; EGP-2; EGP40; KS1/4; MIC18; TROP1; BerEp4; EGP314; HNPCC8; LYNCH8; MOC-31; Ber-Ep4; TACSTD1

Contact

☎ | 400-999-6126

✉ | cn.market@abclonal.com.cn

🌐 | www.abclonal.com.cn

Product Information

Source

Rabbit

Isotype

IgG

Purification

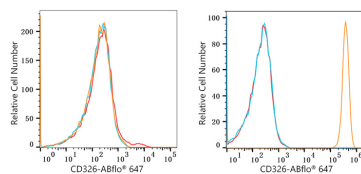
Affinity purification

Storage

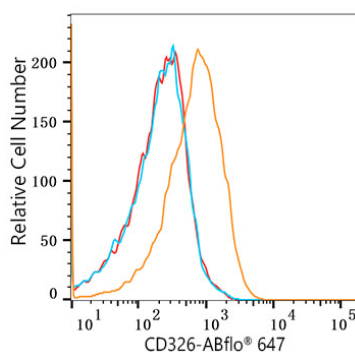
Store at 2-8°C. Avoid freeze.

Buffer: PBS containing 0.2% BSA, preserved with proclin300 or sodium azide (as specified on the Certificate of Analysis), pH 7.3.

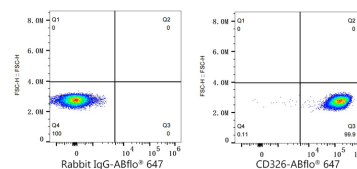
Validation Data



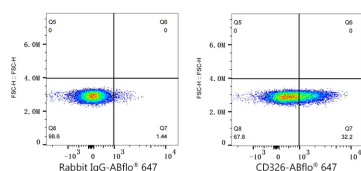
Flow cytometry: 1×10^6 Jurkat cells (negative control, left) and HT-29 cells (right) were surface-stained with ABflo® 647 Rabbit anti-Human CD326/EPCAM mAb (A22486, 2 $\mu\text{g}/\text{mL}$, orange line) or ABflo® 647 Rabbit IgG isotype control (A22070, 2 $\mu\text{g}/\text{mL}$, blue line). Non-fluorescently stained cells were used as blank control (red line).



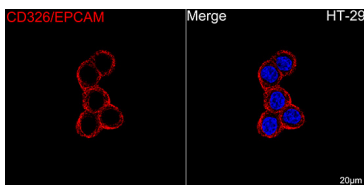
Flow cytometry: 1×10^6 HeLa cells (Low Expression) were surface-stained with ABflo® 647 Rabbit anti-Human CD326/EPCAM mAb (A22486, 5 $\mu\text{l}/\text{Test}$, orange line) or ABflo® 647 Rabbit IgG isotype control (A22070, 5 $\mu\text{l}/\text{Test}$, blue line). Non-fluorescently stained HeLa cells were used as blank control (red line).



Flow cytometry: 1×10^6 HT-29 cells were surface-stained with ABflo® 647 Rabbit IgG isotype control (A22070, 5 $\mu\text{l}/\text{Test}$, left) or ABflo® 647 Rabbit anti-Human CD326/EPCAM mAb (A22486, 5 $\mu\text{l}/\text{Test}$, right).



Flow cytometry: 1×10^6 HeLa cells (Low Expression) were surface-stained with ABflo® 647 Rabbit IgG isotype control (A22070, 5 $\mu\text{l}/\text{Test}$, left) or ABflo® 647 Rabbit anti-Human CD326/EPCAM mAb (A22486, 5 $\mu\text{l}/\text{Test}$, right).



Confocal imaging of HT-29 cells using ABflo® 647 Rabbit anti-Human CD326/EPCAM mAb (A22486, dilution 1:200). DAPI was used for nuclear staining (Blue). Objective: 100x.